



U.S. Department of Transportation

COMPLETE TRIP

ITS  US

The logo for ITS4US features a large blue number '4' with a white dashed line path and two red location pins, one at the top and one at the bottom, suggesting a route or journey.

Task 10 Training:
Institutional, Partnership, and Financial Plan



Shari Schaftlein

Director

FHWA Office of Human Environment

Agenda

- **Brief Program Overview**

- **Institutional, Partnership, and Financial Plan (IPFP) Development**
 - Deliverable Overview
 - IPFP Overview
 - IPFP Sections

- **Resources**
 - Useful References
 - Stay Connected

Program Overview

Complete Trip - ITS4US Deployment Program

- A USDOT Multimodal Deployment Effort, led by ITSJPO and supported by OST, FHWA and FTA
- Supports multiple large-scale replicable deployments to address the challenges of planning and executing all segments of a complete trip



Vision

*Innovative and integrated
complete trip
deployments to support
seamless travel for all users
across all modes,
regardless of location,
income, or disability*

Program Goals



Spur high-impact integrated Complete Trip deployments nationwide



Identify needs and challenges by populations



Develop and deploy mobility solutions that meet user needs

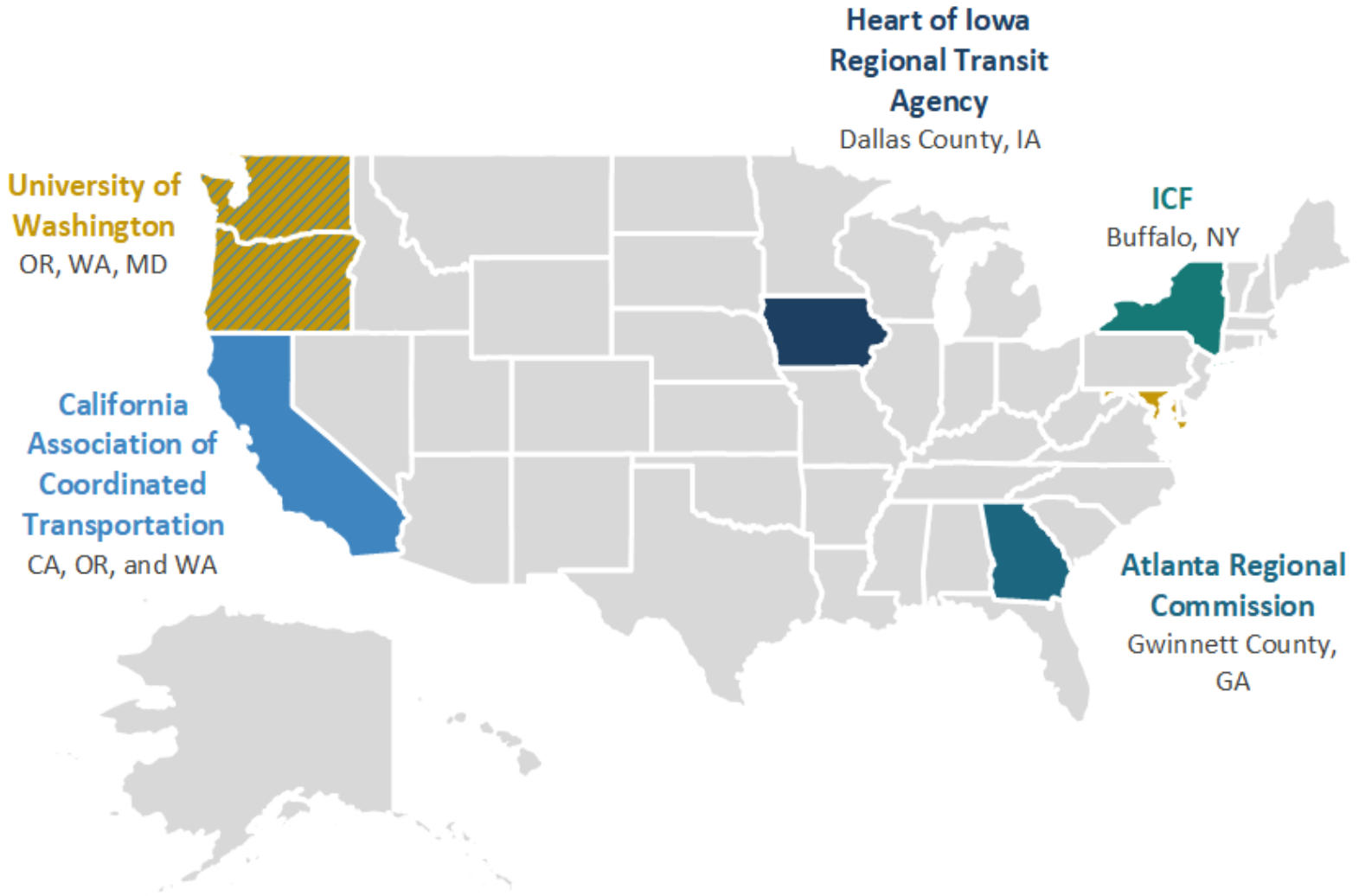


Measure impact of integrated deployments

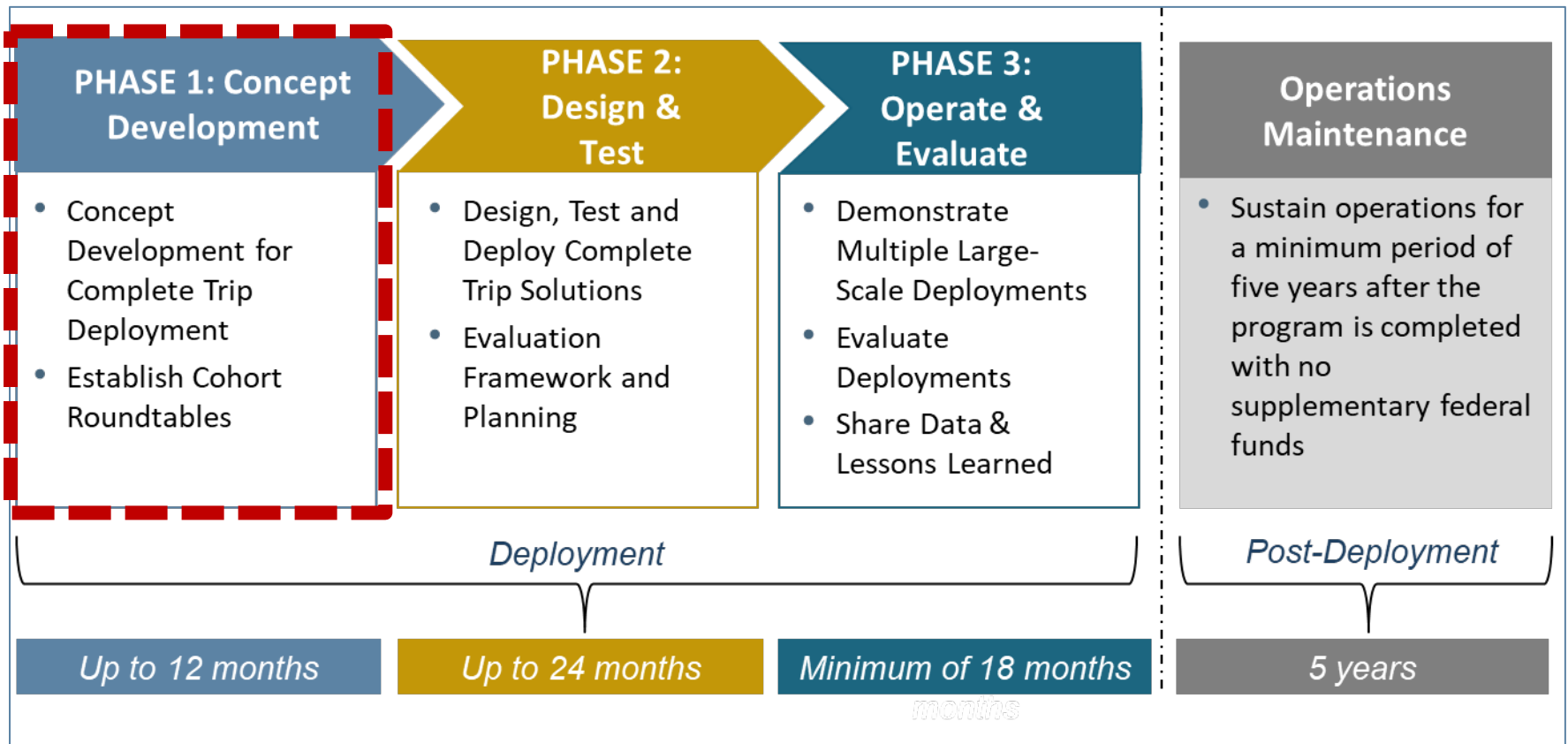


Identify replicable solutions and disseminate lessons learned

Complete Trip Phase 1 Awardees



Deployment Phases



Task 10: Institutional, Partnership, and Financial Plan



IPFP Overview

- The IPFP seeks to help create institutional and financial models that enable long term sustainment of deployments by:
 - Describing the team's governance structure
 - Describing and providing definitive documentation of all partnerships and agreements
 - Describing deployment partnership coordination activities
 - Assessing potential institutional and partnership risks
 - Defining a vision for how agreements will be adapted for post-deployment operations
 - Documenting ADA Transition Plans

IPFP Major Components

Partnership Status Summary

Document the status of developing and implementing agreements, contracts and subcontracts among partner organizations.

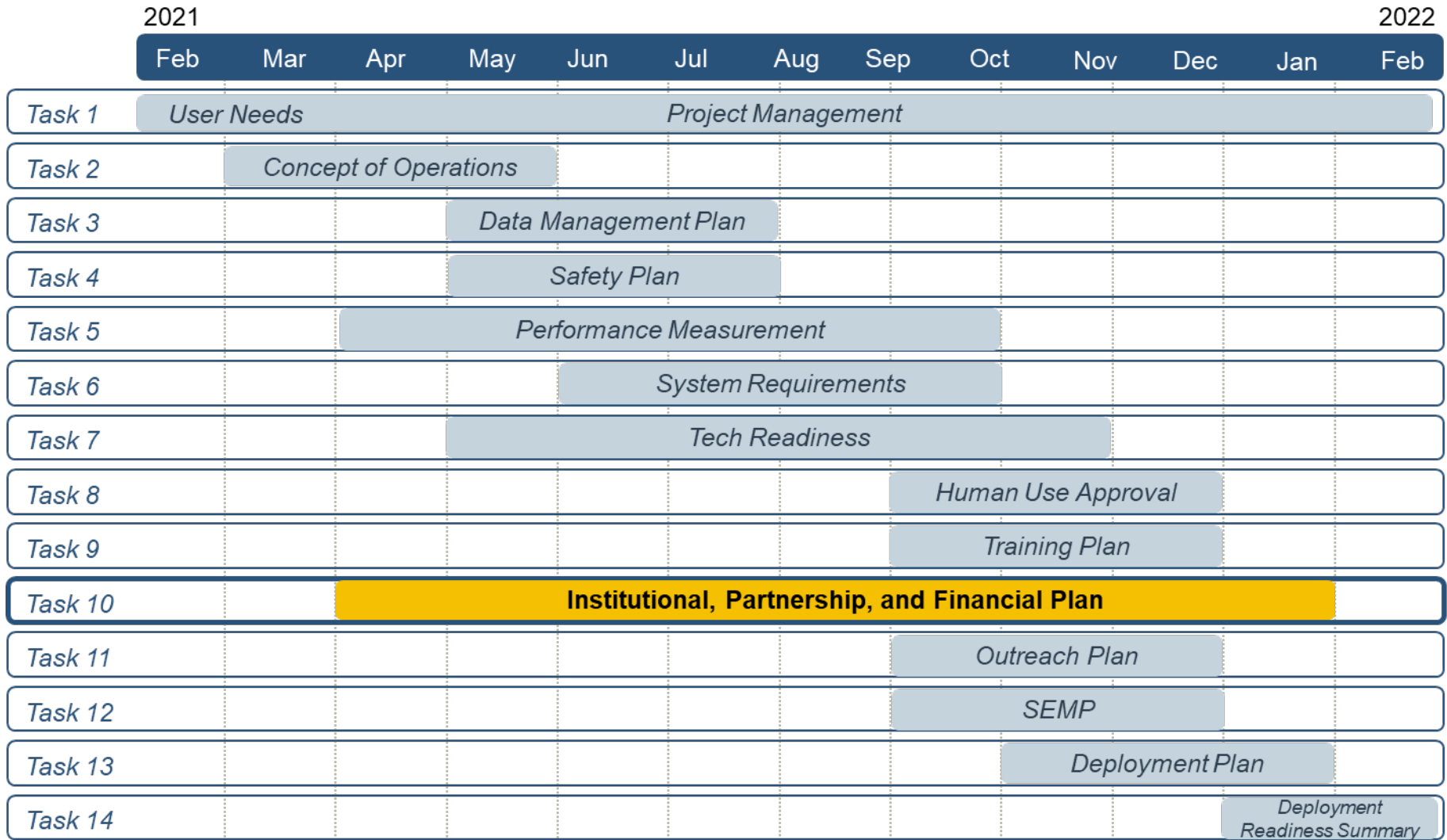
Operations and Management Concept

Describe a practical operations and management concept for Phase 3 and for a period of five years after Phase 3 is completed.

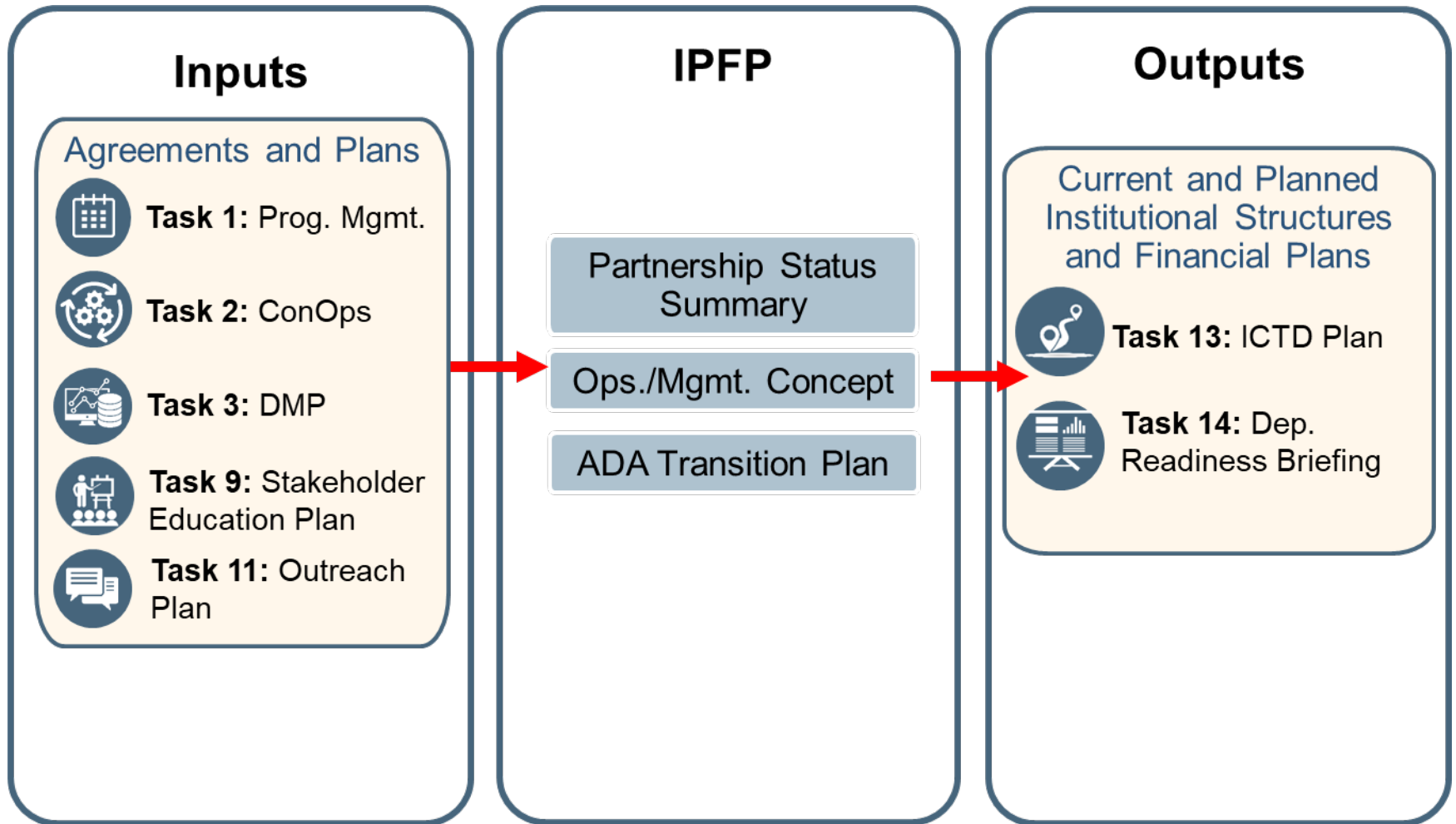
ADA Transition Plans

Disclose the status of any/all ADA Transition Plans for each public sector agency identified as a deployment partner.

IPFP Schedule



IPFP Interdependencies



Task 10 Deliverables

- USDOT requires each site to use the template provided

ID	BAA Section	Task 10: Institutional, Partnership, and Financial Plan (IPFP)	Due Date	Format	Site Specific Date
P1T10D1	5.10	Institutional, Partnership, and Financial Plan (Draft)	Kick-off +42 weeks	Word	
P1T10D2	5.10	Institutional, Partnership, and Financial Plan (Final)*	Kick-off +46 weeks	Word	

*508 Compliant Deliverables

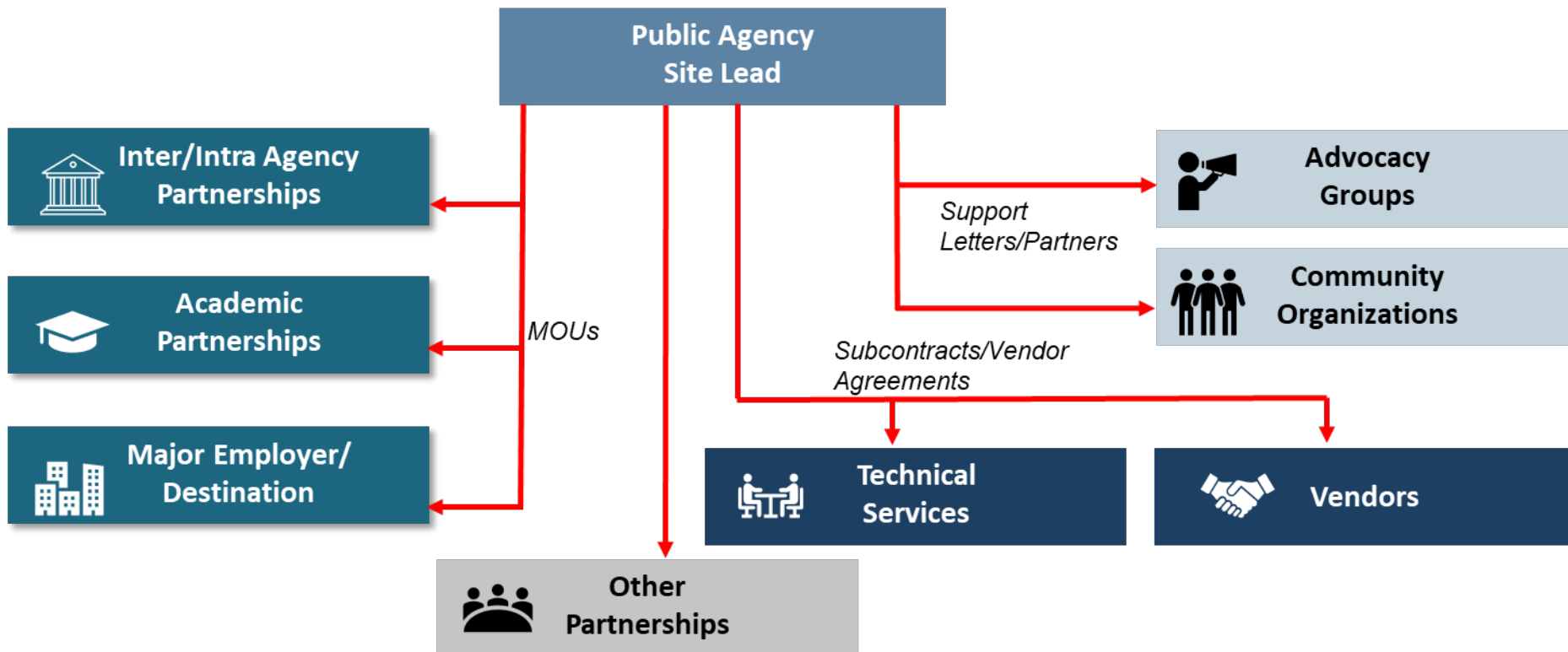
IPFP Sections

IPFP Sections Overview

- Introduction
- Project Team
 - Partnership Status Summary
 - Deployment Partnership Coordination Activities
- Phase 1 Partnerships and Agreements Details
- Risk Assessment
- Operations and Management Concept
- Americans with Disabilities Act (ADA) Transition Plans
- Appendices

Section 2: Project Team

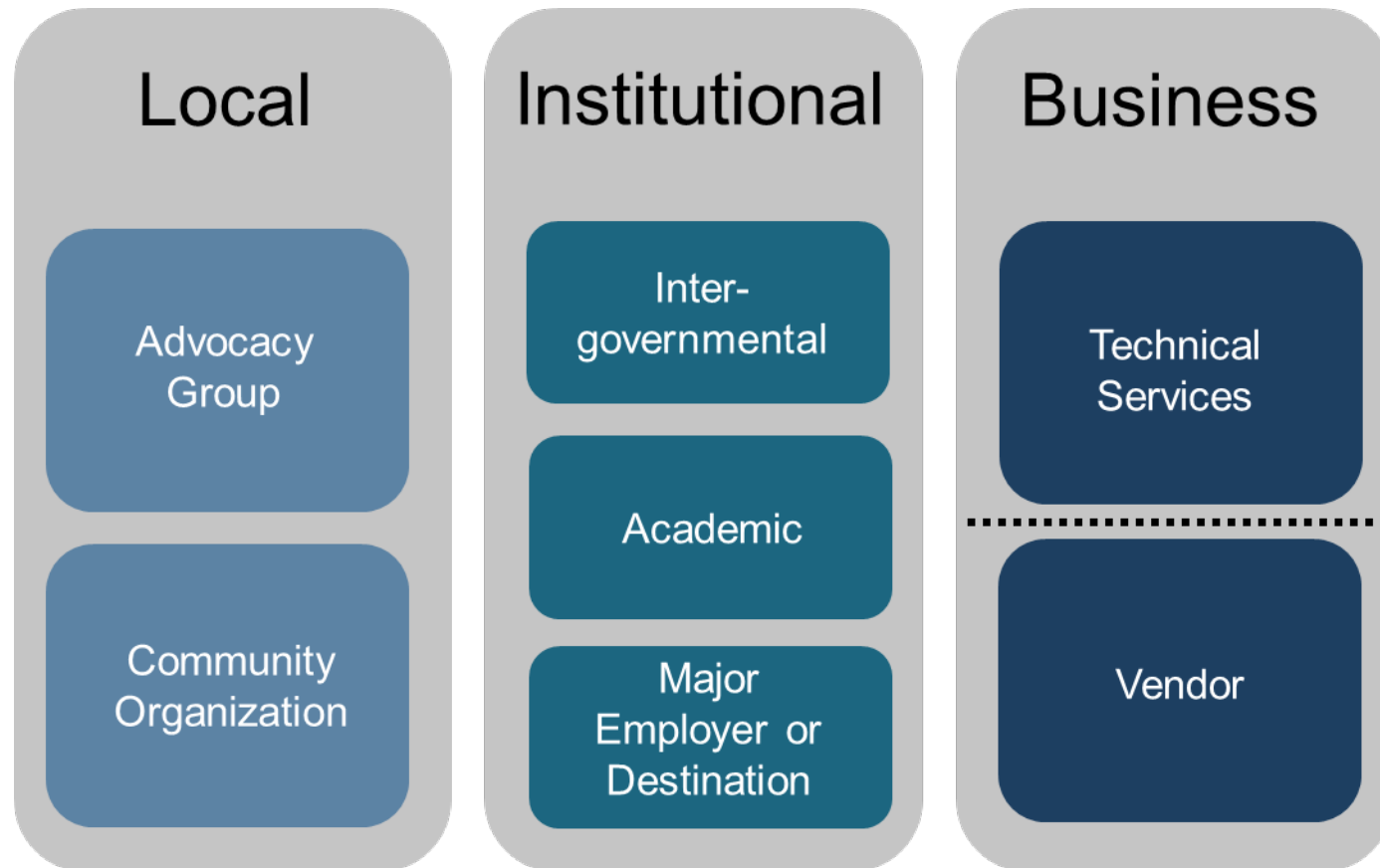
- Describe the team's governance structure for Phase 1.
 - Document relationships among deployment partner organizations



Example Governance Structure Chart

Subsection 2.1 Partnership Status Summary

- Identify organizations, roles, and status of agreements
- Focus on groups actively participating throughout the project



Subsection 2.2: Deployment Partnership Coordination Activities

- Describe stakeholder engagement and coordination conducted to reach agreement on main elements of the deployment
- Summarize broad agreement on deployment elements:



Concept of Operations



Performance Measures and Targets



Operational Changes



Governance Framework and Processes



Data Sharing Agreements



Financial Agreements


Section 3: Phase 1 Partnerships and Agreements Details

- Provide additional details on supporting documentation and financial agreements for each type of agreement identified in Section 2
- Identify partner, nature of support, and deployment phase(s) when they are expected to engage
 - USDOT Contract
 - Institutional Partnerships
 - Local Partnerships
 - Business Partnerships
 - Vendor Procurement
 - Technical Services
 - Other Supporting Partnerships



Subsection 3.1: Institutional Partnerships


- Examples of Institutional Partnerships include:
 - Local/State DOTs
 - Transit agencies
 - Metropolitan Planning Organizations (MPOs)
 - Academic institutions
 - Inter/intra governmental agencies and departments
 - Major employers

Institutional Partner	Nature of Support	Deployment Phase
<p>Regional Metropolitan Planning Organization (RMPO)</p> 	<ul style="list-style-type: none"> • Committed three staff members for 25% of their duties project to lead user needs gathering activities with mobility managers, county/city DOTs, transit agencies. • Committing full-time technical manager for later phases and partial funding for regional trip planning application. 	<ul style="list-style-type: none"> • Phase 1 (User Needs Assessment) • Phase 2-3 & Post-Deployment (Technical Manager)

Example Summary Table

Subsection 3.2: Local Partnerships


- Examples of Local Partnerships include:
 - Advocacy Groups (e.g., The Arc)
 - Community Organizations (e.g., neighborhood associations, social service groups)

Local Partner	Nature of Support	Deployment Phase
<p>Underserved Community Advocacy Group</p> 	<ul style="list-style-type: none"> • Conduct stakeholder outreach and provide local expertise and inputs on key challenges and problems faced by underserved communities for Phase 1. • Recruit and become active participants in Phase 2 and 3 of the deployment. 	<ul style="list-style-type: none"> • Phase 1 (Concept Development, User Needs Assessment) • Phase 2-3 & Post-Deployment (Recruit Active Participants)

Example Summary Table

Subsection 3.3: Business Partnerships

- Examples of Business Partnerships include:
 - Vendor
 - Software developer
 - Hardware & ITS equipment developer
 - Vehicle manufacturer
 - Technical Services
 - Program management
 - Systems engineering/integrators

Business Partner	Nature of Support	Deployment Phase
<p>Systems Engineering Technical Services Provider</p> 	<ul style="list-style-type: none"> • Technical support for project throughout its lifecycle, including stakeholder engagement, user needs analysis, and concept development. • Analyze stakeholder input to develop user needs and system requirements. 	<ul style="list-style-type: none"> • Phases 1-3

Section 4: Risk Assessment

- Assess potential institutional, partnership, and financial issues and identify risks and mitigation strategies for each
 - **Note:** High-level risks identified should be monitored and tracked actively in the Risk Management Matrix prepared under Task 1
- Obtain insights from:
 - Proposals and kick-off presentations from deployment sites
 - Early deliverables
 - Discussions with partners and stakeholders



Examples & Importance of Risk Assessment

- Example institutional, partnership, and financial risks include:
 - Coordination of different geographic scales of government
 - Agreements with private mobility providers
 - Revenues for financial sustainability during and after deployment
 - Legal authority and regulations
- Documentation of plan and implementation of mitigation strategies reduces risk in later phases
- Lessons learned documentation for handling institutional, business and financial issues are resources for other deployers



Section 5: Operations and Management

Concept

- Sustainability must be achieved without reliance on Federal funding
- Need formal commitment to continue to fund project after deployment period
- Must be able to sustain operations after Phase 3 for minimum of 5 years
- Document how the earlier governance structure and partnerships may need to adapt or change to continue operations after the deployment period
- Document partnerships expected to be continued or pursued beyond Phase 3



Section 6: Americans with Disabilities Act (ADA) Transition Plan

- Identify the status and projected development path of any/all ADA Transition Plans for each public sector agency
 - Examples of Public Agencies:
 - Local/State DOTs
 - Transit agencies
 - Metropolitan Planning Organizations (MPOs)
 - Inter/intra governmental agencies and departments
 - Local governments
- Include any ADA Transition Planning related legal actions:
 - Open
 - Pending
 - Unresolved
- For additional information:
<https://www.fhwa.dot.gov/civilrights/programs/ada/resources.cfm>

Resources

Useful References (Part 1)

- Complete Trip Webinar #2: Engaging Stakeholders, Developing Partnerships, and Following the Planning Process, February 2020
https://www.its.dot.gov/its4us/pdf/its4us_webinar_2.pdf
- USDOT Guidance for Connected Vehicle Deployments: Institutional and Business Issues and Financial Sustainability, July 2016
<https://rosap.ntl.bts.gov/view/dot/31593>
- Federal Highway Administration – Office of Civil Rights: ADA Guidance, Resources, Useful Links, and Memoranda (various dates)
<https://www.fhwa.dot.gov/civilrights/programs/ada/resources.cfm>

Useful References (Part 2)

- NCHRP Report 898, A Guide to Developing Financial Plans and Performance Measures for Transportation Asset Management, 2019
<https://www.nap.edu/catalog/25285/a-guide-to-developing-financial-plans-and-performance-measures-for-transportation-asset-management>
- Guide to Improving Capability for Systems Operations and Management, SHRP 2 Report S2-L06-RR-2, 2011
<https://www.nap.edu/catalog/14513/guide-to-improving-capability-for-systems-operations-and-management>
- Institutional Architectures to Improve Systems Operations and Management, S2-L06-RR-1, 2012,
<https://www.nap.edu/catalog/14512/institutional-architectures-to-improve-systems-operations-and-management>

Stay Connected

For more information please contact:

Elina Zlotchenko, ITS JPO

ITS4US Program Manager

Elina.Zlotchenko@dot.gov

Shari Schafflein

ITS4US Partnership Lead

Shari.Schafflein@dot.gov

Visit the Complete Trip - ITS4US Deployment Program Website

<https://its.dot.gov/its4us/>

Any questions?

