




# Example CV Pilot Deployment Concepts: Greypool County

Carl Andersen (FHWA)

# Greypool County Operations

## Greypool County DOT:

- Rural county in Southwest U.S.
- Summers focused on enhancing road weather safety. The county experiences extreme heat, severe lightning storms, and dust storms
- Incident response often requires response vehicles (e.g., ambulance, fire, and police) to travel long distances



Limited road weather information collected by TMCs and disseminated to drivers



Severe incidents at rural intersections



Limited transit options into Greypool;  
Long wait times for fixed transit

# Stakeholders Convene and Identify Key Transportation Challenges

---

## ▪ Safety at Rural Intersections

- Poor line of sight at intersections and high speeds on the mainline often result in drivers misjudging gaps when departing from stop signs
- Red light running violations are prevalent at signalized intersections
- Collision at intersections when a vehicle is turning left result in the most severe crashes – often resulting in injuries and fatalities

## ▪ Accessibility in Greypool County

- Existing fixed route transit options do not serve the majority of the destinations in the county
- Transit stops are not always accessible to travelers and travelers often experience long wait times at transit stops

## ▪ Road Weather Information Dissemination

- Unpredictable weather (e.g., lightning storms, dust storms) during summer months often cause delays and impact safety
- Limited deployed devices in the field to collect road weather information
- Limited mechanisms to disseminated proactive road weather information to drivers



# Stakeholder Set Three Key Improvement Targets

Goal	Performance Measure	Performance Target
Reduces crashes, injuries, and fatalities	Number of crashes, Injuries and fatalities	Reduce crashes by 10%; injuries by 20%; and fatalities by 30%
Improve accessibility	Transit wait times	Provide transit options to areas not being served by fixed transit in Greypool County  Reduce wait times for transit riders by 20%
Improve collection and dissemination of road weather information	Number of weather-related traveler information	Increase availability of weather-related traveler information



# Applications Considered for Improving Safety

## V2I Safety

### Red Light Violation Warning

Curve Speed Warning

### Stop Sign Gap Assist

Spot Weather Impact Warning

Reduced Speed/Work Zone Warning

Pedestrian in Signalized Crosswalk Warning (Transit)

## V2V Safety

Emergency Electronic Brake Lights (EEBL)

Forward Collision Warning (FCW)

Intersection Movement Assist (IMA)

### Left Turn Assist (LTA)

Blind Spot/Lane Change Warning (BSW/LCW)

Do Not Pass Warning (DNPW)

Vehicle Turning Right in Front of Bus Warning (Transit)

## Road Weather

Motorist Advisories and Warnings (MAW)

Enhanced MDSS

Vehicle Data Translator (VDT)

Weather Response Traffic Information (WxTINFO)

## Environment

Eco-Approach and Departure at Signalized Intersections

Eco-Traffic Signal Timing

Eco-Traffic Signal Priority

Connected Eco-Driving

Wireless Inductive/Resonance Charging

Eco-Lanes Management

Eco-

Eco-Cooperative Adaptive Cruise Control

Eco-Traveler Information

Eco-Ramp Metering

Low Emissions Zone Management

AFV Charging / Fueling Information

Eco-Smart Parking

Dynamic Eco-Routing (light vehicle, transit, freight)

Eco-ICM Decision Support System

## Agency Data

Probe-based Pavement Maintenance

Probe-enabled Traffic Monitoring

Vehicle Classification-based Traffic Studies

CV-enabled Turning Movement & Intersection Analysis

CV-enabled Origin-Destination Studies  
Work Zone Traveler Information

## Mobility

Advanced Traveler Information System

Intelligent Traffic Signal System (I-SIG)

Signal Priority (transit, freight)

Mobile Accessible Pedestrian Signal System (PED-SIG)

Emergency Vehicle Preemption (PREEMPT)

Dynamic Speed Harmonization (SPD-HARM)

Queue Warning (Q-WARN)

Cooperative Adaptive Cruise Control (CACC)

Incident Scene Pre-Arrival Staging Guidance for Emergency Responders (RESP-STG)

Incident Scene Work Zone Alerts for Drivers and Workers (INC-ZONE)

Emergency Communications and Evacuation (EVAC)

Connection Protection (T-CONNECT)

Dynamic Transit Operations (T-DISP)

Dynamic Ridesharing (D-RIDE)

Freight-Specific Dynamic Travel Planning and Performance

Drayage Optimization

## Smart Roadside

Wireless Inspection

Smart Truck Parking

Improve Safety



# Applications Considered for Increasing Accessibility

## V2I Safety

Red Light Violation Warning  
 Curve Speed Warning  
 Stop Sign Gap Assist  
 Spot Weather Impact Warning  
 Reduced Speed/Work Zone Warning  
 Pedestrian in Signalized Crosswalk Warning (Transit)

## V2V Safety

Emergency Electronic Brake Lights (EEBL)  
 Forward Collision Warning (FCW)  
 Intersection Movement Assist (IMA)  
 Left Turn Assist (LTA)  
 Blind Spot/Lane Change Warning (BSW/LCW)  
 Do Not Pass Warning (DNPW)  
 Vehicle Turning Right in Front of Bus Warning (Transit)

## Road Weather

Motorist Advisories and Warnings (MAW)  
 Enhanced MDSS  
 Vehicle Data Translator (VDT)  
 Weather Response Traffic Information (WxTINFO)

## Environment

Eco-Approach and Departure at Signalized Intersections  
 Eco-Traffic Signal Timing  
 Eco-Traffic Signal Priority  
 Connected Eco-Driving  
 Wireless Inductive/Resonance Charging  
 Eco-Lanes Management  
 Eco-Speed Harmonization  
 Eco-Adaptive Cruise Control  
 Eco-Intersection Control  
 Eco-Queue Management  
 Eco-Ramp Metering  
 Low Emissions Zone Management  
 AFV Charging / Fueling Information  
 Eco-Smart Parking  
 Dynamic Eco-Routing (light vehicle, transit, freight)  
 Eco-ICM Decision Support System

**Increase Accessibility**

## Agency Data

Probe-based Pavement Maintenance  
 Probe-enabled Traffic Monitoring  
 Vehicle Classification-based Traffic Studies  
 CV-enabled Turning Movement & Intersection Analysis  
 CV-enabled Origin-Destination Studies  
 Work Zone Traveler Information

## Mobility

Advanced Traveler Information System  
 Intelligent Traffic Signal System (I-SIG)  
 Signal Priority (transit, freight)  
 Mobile Accessible Pedestrian Signal System (PED-SIG)  
 Emergency Vehicle Preemption (PREEMPT)  
 Dynamic Speed Harmonization (SPD-HARM)  
 Queue Warning (Q-WARN)  
 Cooperative Adaptive Cruise Control (CACC)  
 Incident Scene Pre-Arrival Staging Guidance for Emergency Responders (RESP-STG)  
 Incident Scene Work Zone Alerts for Drivers and Workers (INC-ZONE)  
 Emergency Communications and Evacuation (EVAC)  
 Connection Protection (T-CONNECT)  
**Dynamic Transit Operations (T-DISP)**

Dynamic Ridesharing (D-RIDE)  
 Freight-Specific Dynamic Travel Planning and Performance  
 Drayage Optimization

## Smart Roadside

Wireless Inspection  
 Smart Truck Parking



# Applications Considered for Informing Drivers During Bad Weather

## V2I Safety

Red Light Violation Warning  
 Curve Speed Warning  
 Stop Sign Gap Assist  
 Spot Weather Impact Warning  
 Reduced Speed/Work Zone Warning  
 Pedestrian in Signalized Crosswalk Warning (Transit)

## V2V Safety

Emergency Electronic Brake Lights (EEBL)  
 Forward Collision Warning (FCW)  
 Intersection Movement Assist (IMA)  
 Left Turn Assist (LTA)  
 Blind Spot/Lane Change Warning (BSW/LCW)  
 Do Not Pass Warning (DNPW)  
 Vehicle Turning Right in Front of Bus Warning (Transit)

## Road Weather

Motorist Advisories and Warnings (MAW)  
 Enhanced MDSS  
 Vehicle Data Translator (VDT)

**Weather Response Traffic Information (WxTINFO)**

## Environment

Eco-Approach and Departure at Signalized Intersections  
 Eco-Traffic Signal Timing  
 Eco-Traffic Signal Priority  
 Connected Eco-Driving  
 Wireless Inductive/Resonance Charging  
 Eco-Lanes Management  
 Eco-Speed Harmonization  
 Eco-Cooperative Adaptive Cruise Control  
 Eco-Traveler Information  
 Eco-Ramp Metering  
 Low AFV  
 Eco-Smart Parking  
 Dynamic Eco-Routing (light vehicle, transit, freight)  
 Eco-ICM Decision Support System

## Agency Data

Probe-based Pavement Maintenance  
 Probe-enabled Traffic Monitoring  
 Vehicle Classification-based Traffic Studies  
 CV-enabled Turning Movement & Intersection Analysis  
 CV-enabled Origin-Destination Studies  
 Work Zone Traveler Information

## Mobility

Advanced Traveler Information System  
 Intelligent Traffic Signal System (I-SIG)  
 Signal Priority (transit, freight)  
 Mobile Accessible Pedestrian Signal System (PED-SIG)  
 Emergency Vehicle Preemption (PREEMPT)  
 Dynamic Speed Harmonization (SPD-HARM)  
 Queue Warning (Q-WARN)  
 Cooperative Adaptive Cruise Control (CACC)  
 Incident Scene Pre-Arrival Staging Guidance for Emergency Responders (RESP-STG)  
 Incident Scene Work Zone Alerts for Drivers and Workers (INC-ZONE)  
 Emergency Communications and Evacuation (EVAC)  
 Connection Protection (T-CONNECT)  
 Dynamic Transit Operations (T-DISP)  
 Dynamic Ridesharing (D-RIDE)  
 Freight-Specific Dynamic Travel Planning and Performance  
 Drayage Optimization

## Smart Roadside

Wireless Inspection  
 Smart Truck Parking

**Manage Weather Events**

# Connected Vehicle Applications Selected in Performance-Driven Approach

## Improve Safety

- Red Light Violation Warning
- Stop Sign Gap Assist
- Left Turn Assist

## Increase Accessibility

- Dynamic Transit Operations (T-DISP)

## Informing Drivers During Bad Weather

- Weather Response Traffic Information (WxTINFO)





# Projected Synergies and Impacts from Safety Applications in the Deployment Concept

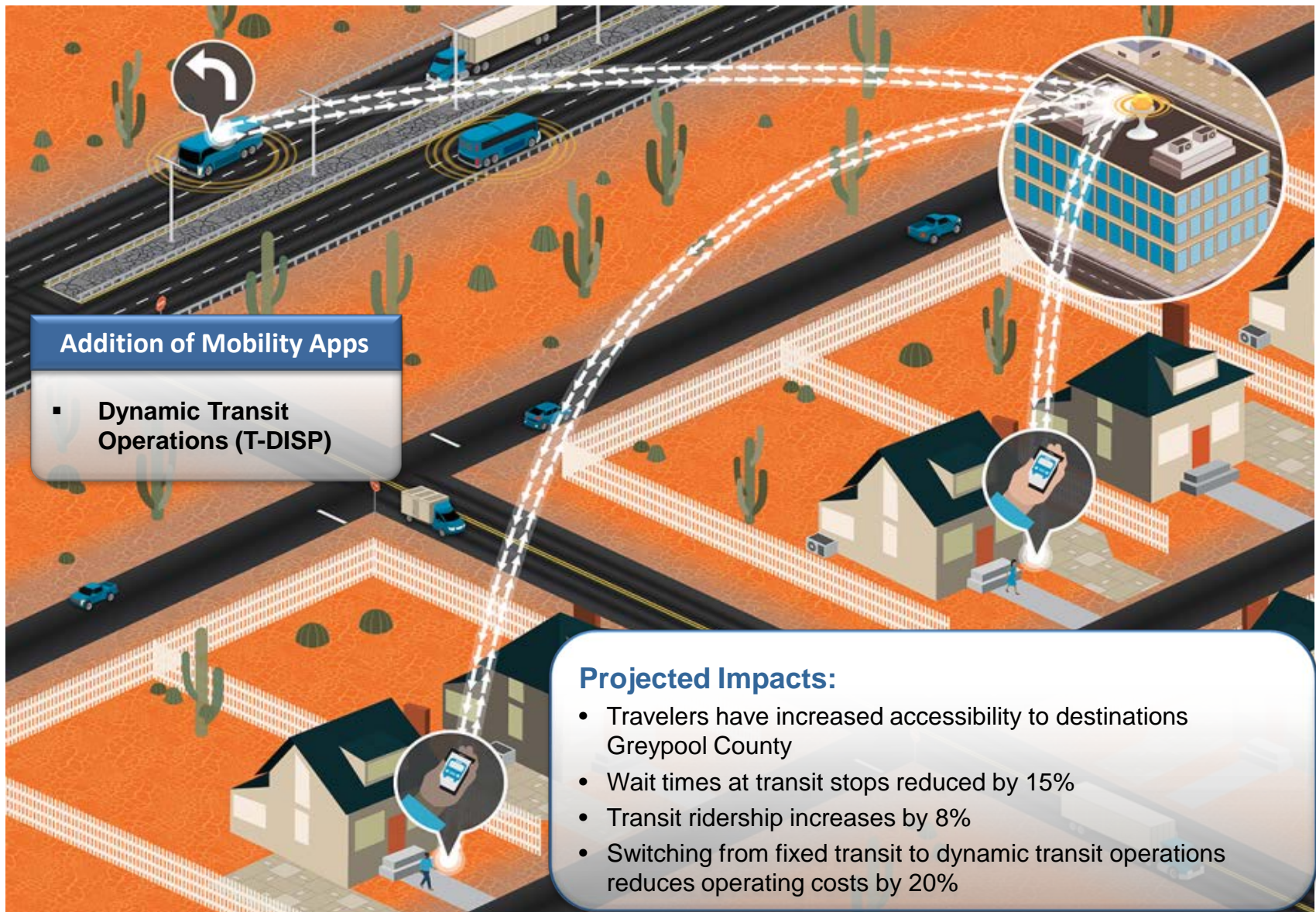
## Addition of Safety Apps

- Red Light Violation Warning
- **Stop Sign Gap Assist**
- Left Turn Assist

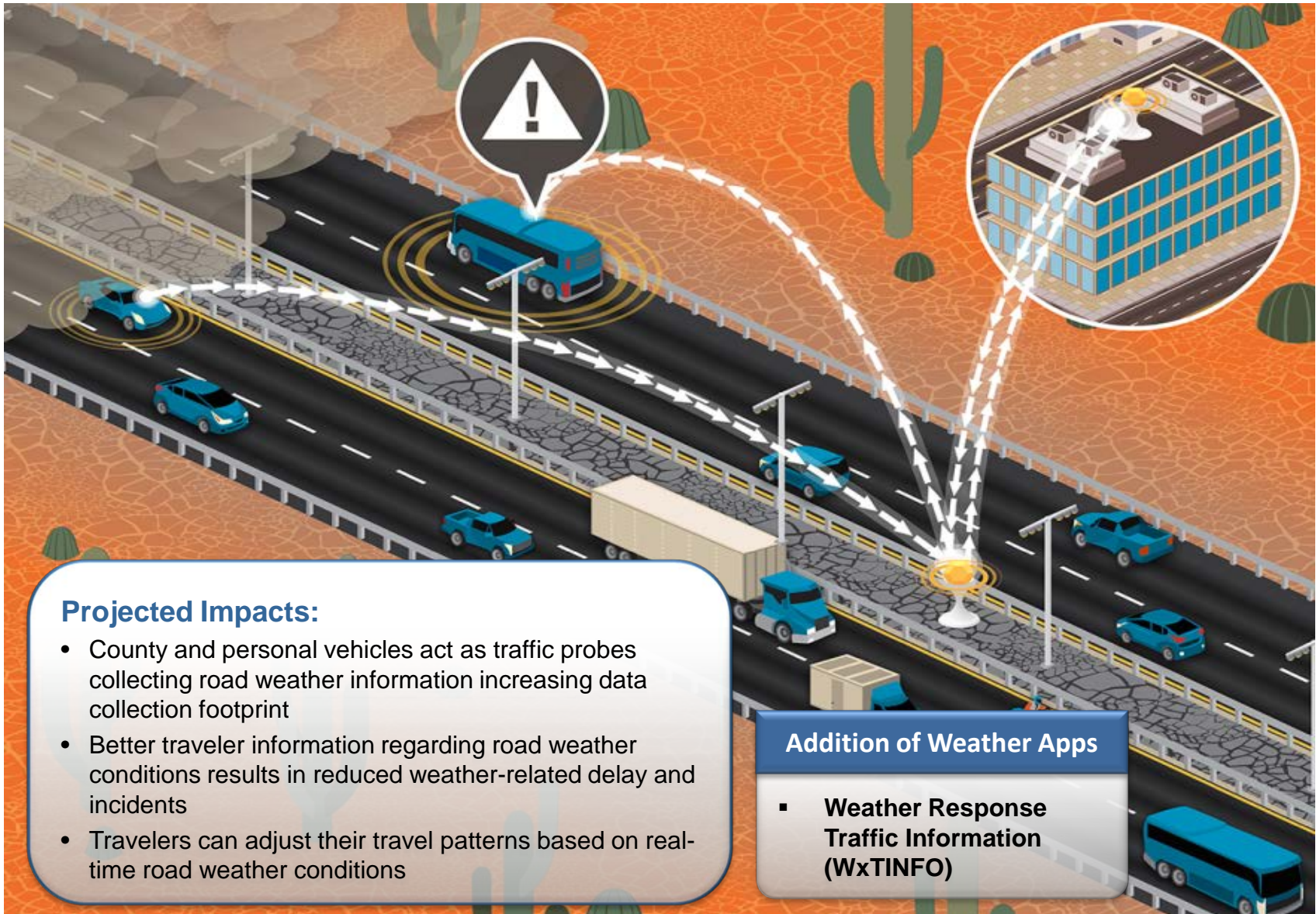
## Projected Impacts:

- Significant reduction in collisions, injuries, and fatalities at intersections.
- Non-recurring congestion resulting from incidents is reduced by 30%

# Projected Synergies and Impacts from Mobility Applications in the Deployment Concept



# Projected Synergies and Impacts from Road Weather Applications in the Deployment Concept



# Integrated Concept for Greypool Operations

