



U.S. Department of Transportation

# ITS4US

---

**IT'S TRANSPORTATION FOR ALL OF US**

**2022 AMPO Annual Conference**

**Improving Mobility for Vulnerable Communities**

**October 25, 2022**



# Elina Zlotchenko

Program Manager  
ITS Joint Program Office

# Agenda

---

- ITS4US Program Overview
- ITS4US Site Summaries
  - Georgia Department of Transportation (GDOT)
  - Heart of Iowa Regional Transit Agency (HIRTA)
  - Niagara Frontier Transportation Authority (NFTA)/Buffalo
  - University of Washington (UW)
- Q&A

MPOs will need to consider ITS4US-related deployments early in the planning process.

# ITS4US Program Overview

# Program Overview

---

- A USDOT Multimodal Deployment effort, led by ITS JPO and supported by OST, FHWA and FTA
- Supports multiple large-scale replicable deployments to address the challenges of planning and executing all segments of a complete trip

## Vision

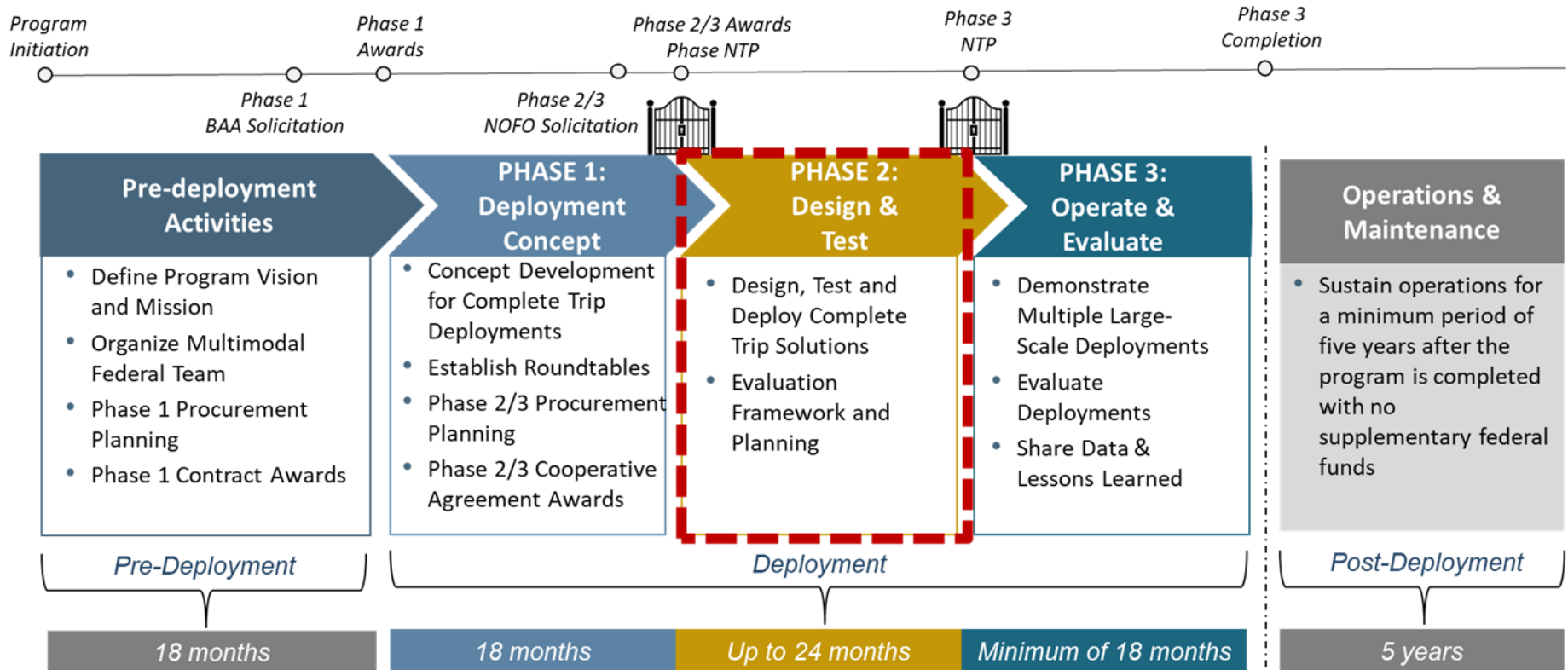
Innovative and integrated complete trip deployments to support seamless travel for all users across all modes, regardless of location, income, or disability

# ITS4US Program Fundamental Elements

---

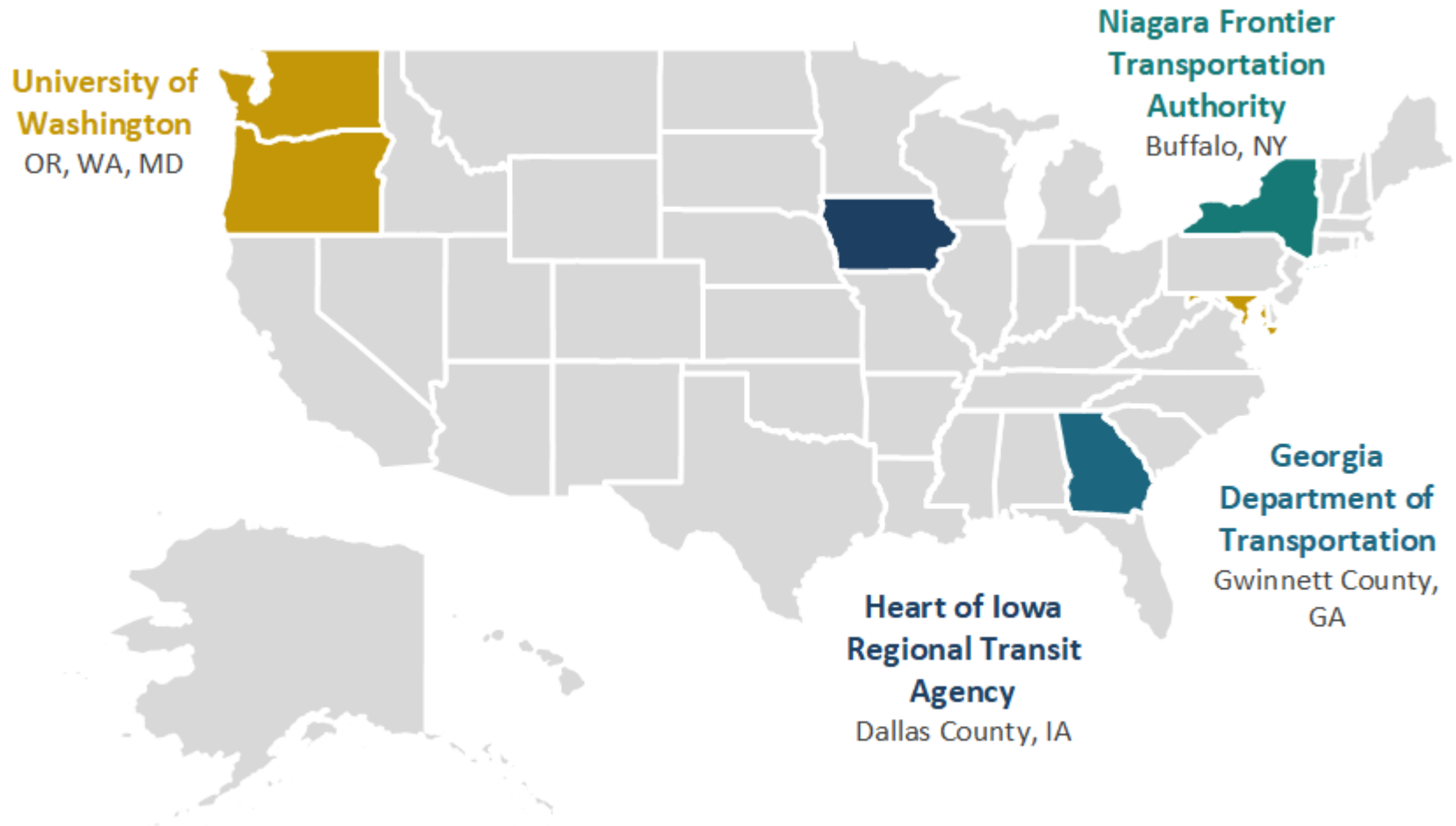
- Site deployments will be real-world environment **deployments**
- Serve as replicable models and remain in operation
- There are **multiple** site deployments
- Unique solutions to address critical, local challenges
- Deployments are expected to be both **large-scale and multi-modal**
- **Large-scale** implies deployments will have measurable impact
- Sites will deploy **multiple technologies and modes**

# Deployment Phases



# Phase 2 and 3 Awardees

---







U.S. Department of Transportation

# ITS4US

---

**IT'S TRANSPORTATION FOR ALL OF US**

**Georgia Department of Transportation (GDOT)  
Safe Trips in a Connected Transportation Network (ST-CTN)**

**Natalie Smusz-Mengelkoch (ICF)**



# Natalie Smusz- Mengelkoch

Co-Deployment Lead GDOT Site  
ICF

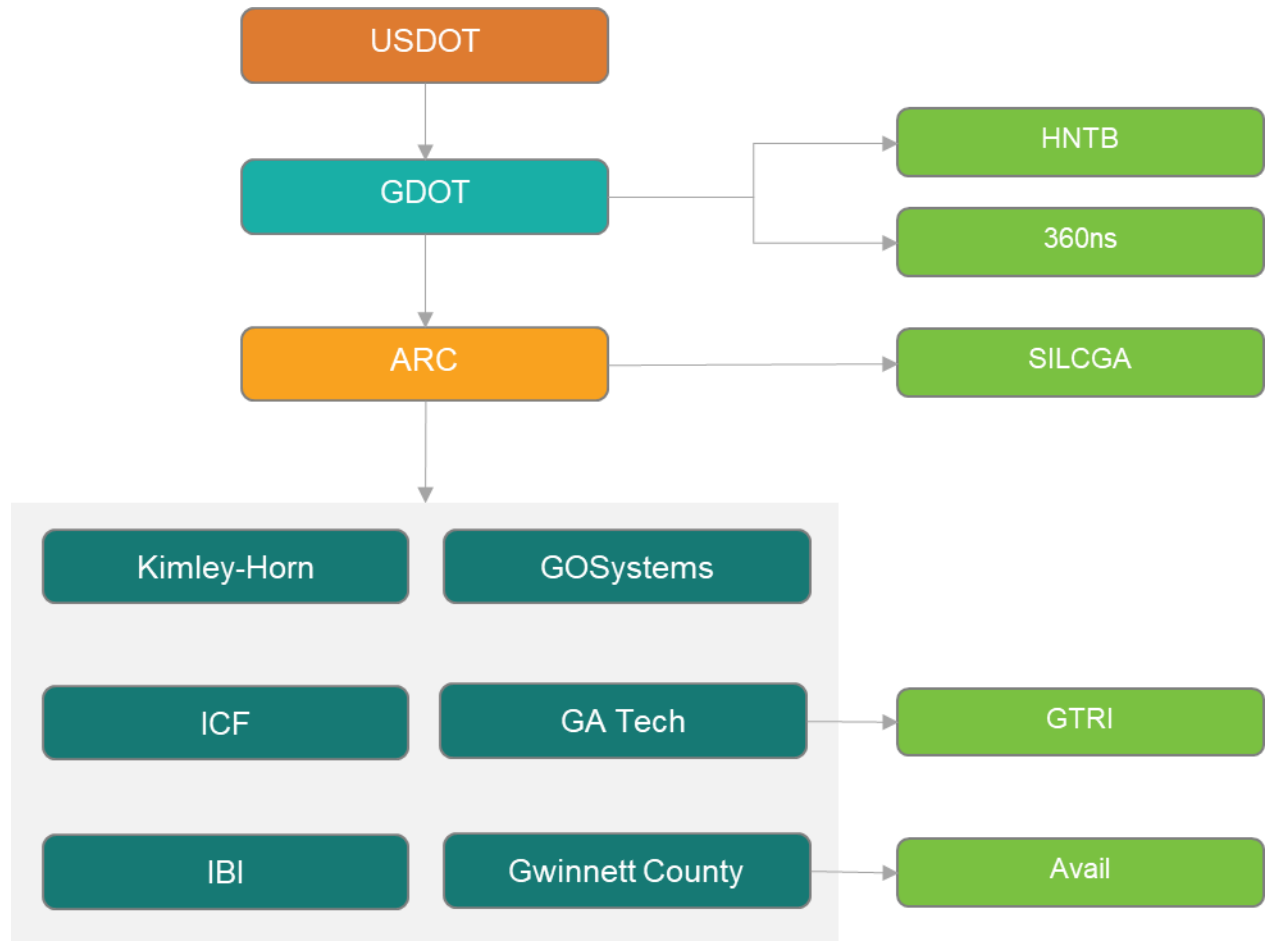
# Safe Trips in a Connected Transportation Network (ST-CTN)



- Deployment area: Gwinnett County, Georgia
- Uses a mobile application with ability for users to:
  - Create personalized trip plans based on needs and preferences
  - Receive alternative trip routes
- Comprised of an integrated set of advanced transportation technologies including:
  - Connected vehicles
  - Transit signal priority
  - Machine learning
  - Predictive analysis

# Deployment Concept – Phase 2/3

## Project Team



# Project Foundation

## ▪ Regional TSMO Plan Priorities

- Optimizing Safety; Reliable Travel Times; Efficient, Seamless Travel; Equitable Access; Environmental Benefit

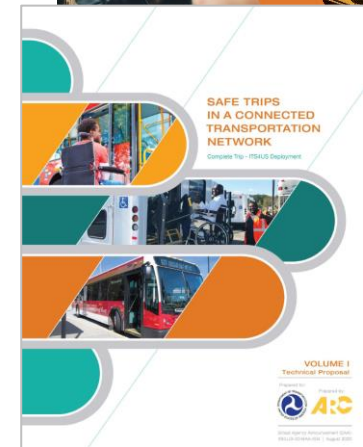
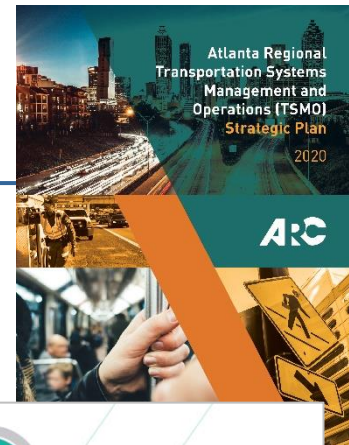
## ▪ Strategic Action Plan Initiatives

- Initiative 1: Strengthen TSMO Planning and Institutions
- Initiative 2: Enhance Data Sharing and Management
- Initiative 3: Encourage TSMO Innovation
- Initiative 4: Deploy Connected and Automated Vehicle Technologies
- Initiative 5: Advance Regional Coordination and Network Comm
- Initiative 7: Enhance Transit Operations

## ▪ Regional ITS Architecture Update

## ▪ Relationships

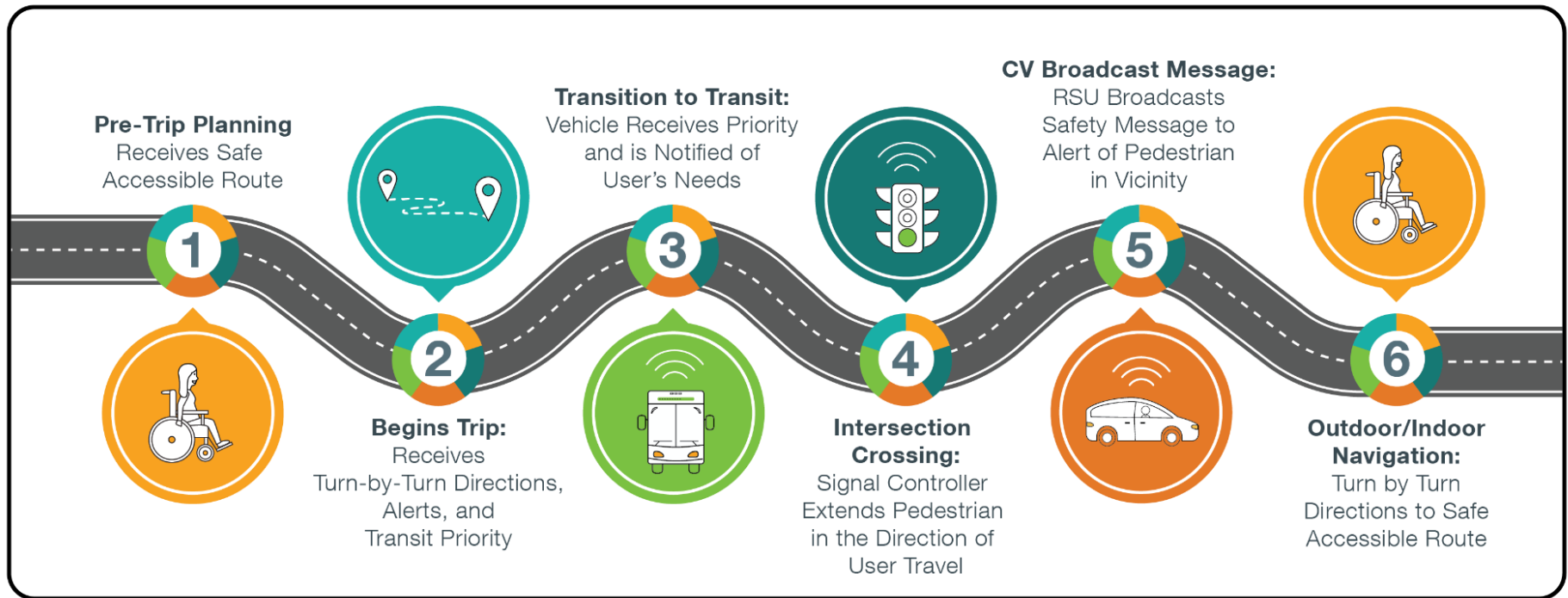
- Built stronger relationships across agencies through plan development
- Discovered and encouraged champions across agencies



# Deployment Concept – Project Overview

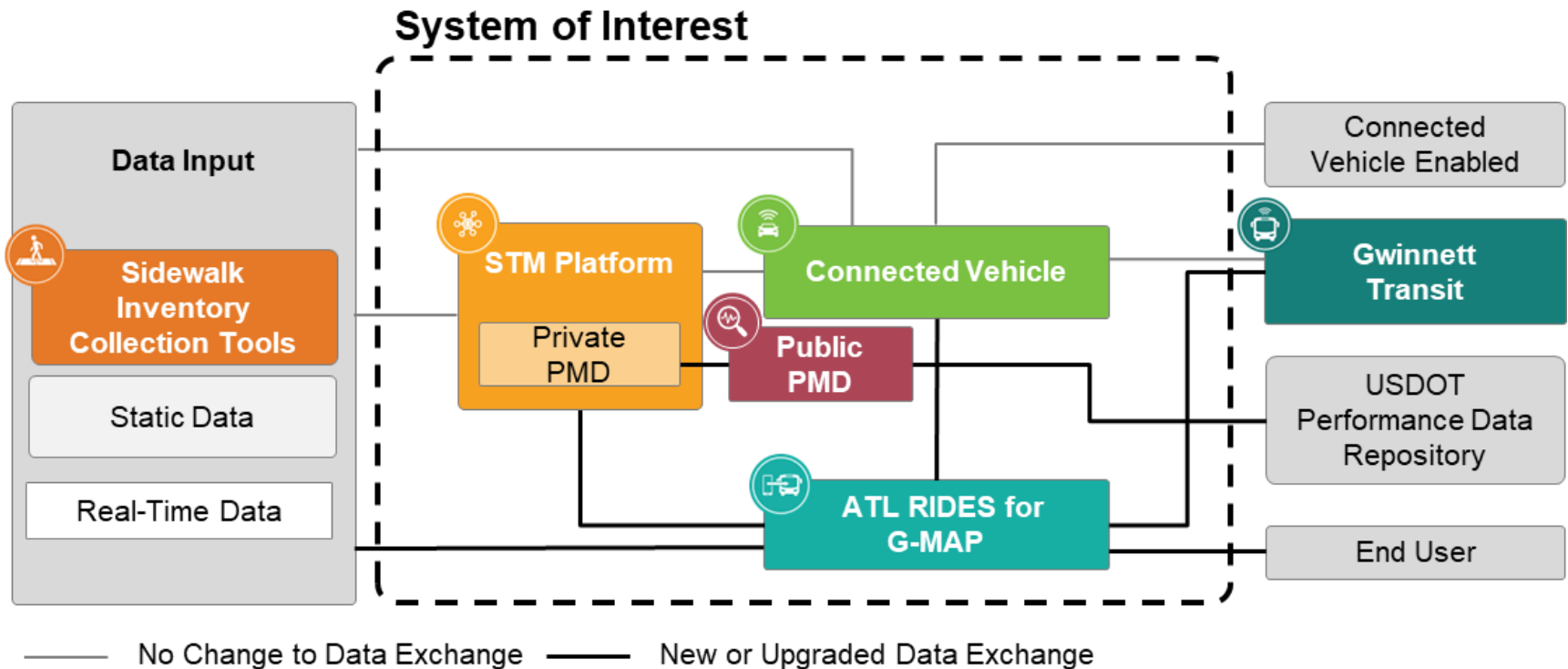


## Safe Trips in a Connected Transportation Network





# Technical Approach – Context Diagram





U.S. Department of Transportation

# ITS4US

---

**IT'S TRANSPORTATION FOR ALL OF US**

**Heart of Iowa Regional Transit Agency (HIRTA)**  
Health Connector for the Most Vulnerable: An Inclusive Mobility Experience  
from Beginning to End

**Chris Zeilinger, CTAA**





# Chris Zeilinger

Deployment Lead  
Heart of Iowa Regional Transit  
Agency

# Health Connector for the Most Vulnerable

---

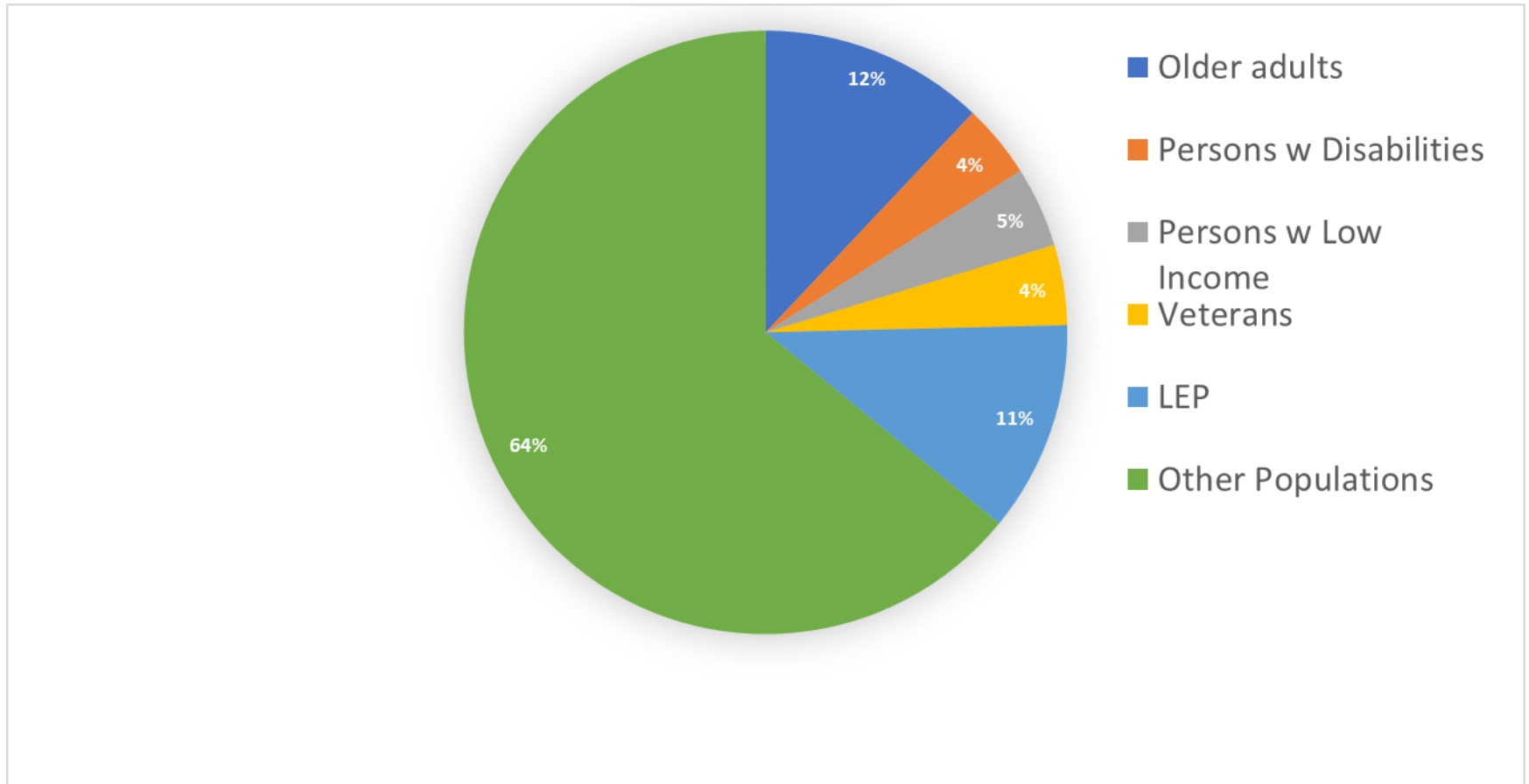
- Deployment area: Dallas County, Iowa
- Implement a scalable and replicable solution enabling transportation access to healthcare for all underserved populations and their caregivers
  - Use advanced technologies to resolve barriers
- Include information and wayfinding services to guide each step of user's trip
- Provide enhanced access to healthcare options for all travelers in Dallas County, a mostly rural county

# HIRTA and Dallas County Overview

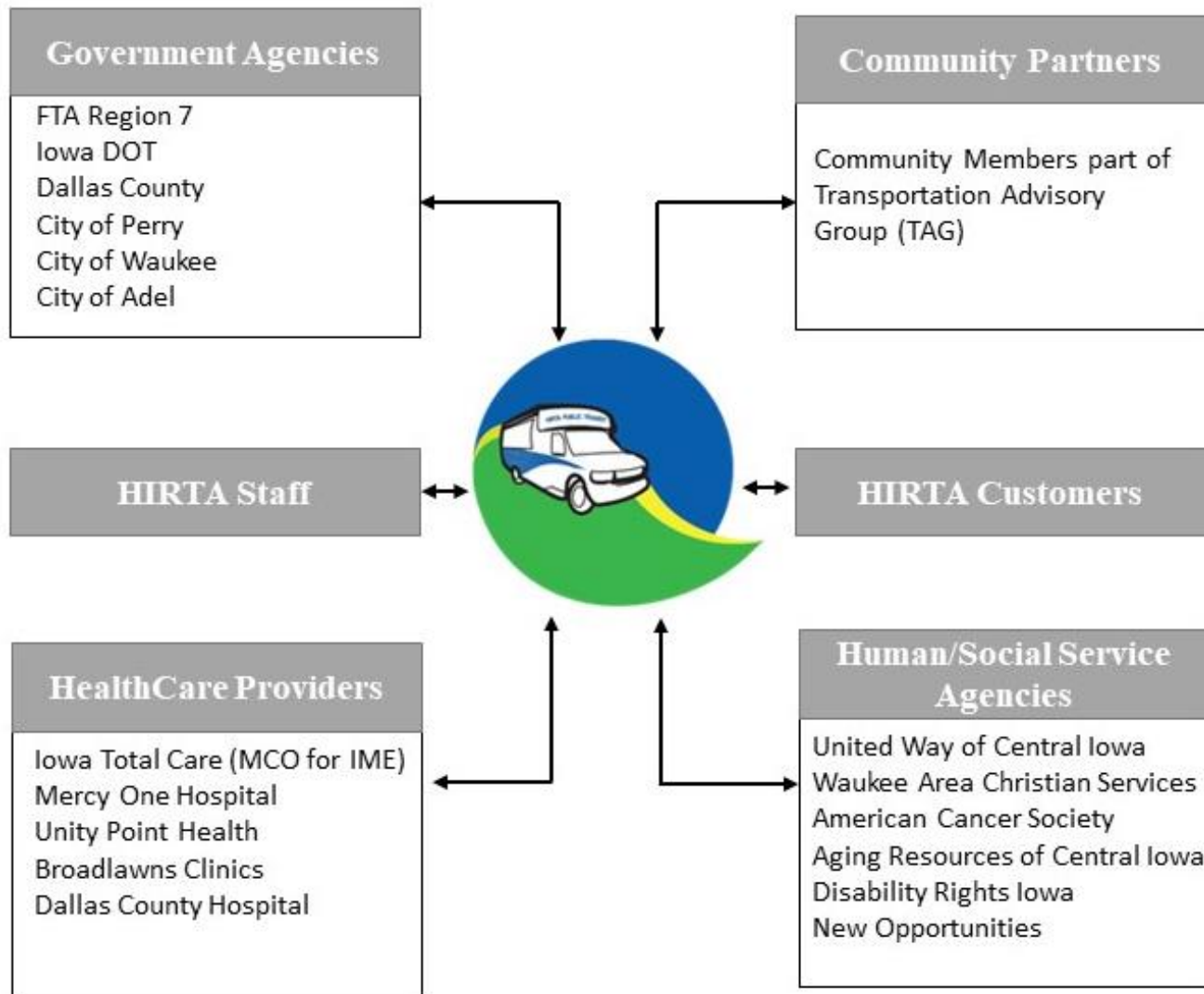
---

- HIRTA provides demand response services to population in 7 county areas, including Dallas County
- Dallas County grew 36% in the last decade
- Coordination of medical transportation services for underserved a major challenge

# Dallas County Underserved Population



# Stakeholders

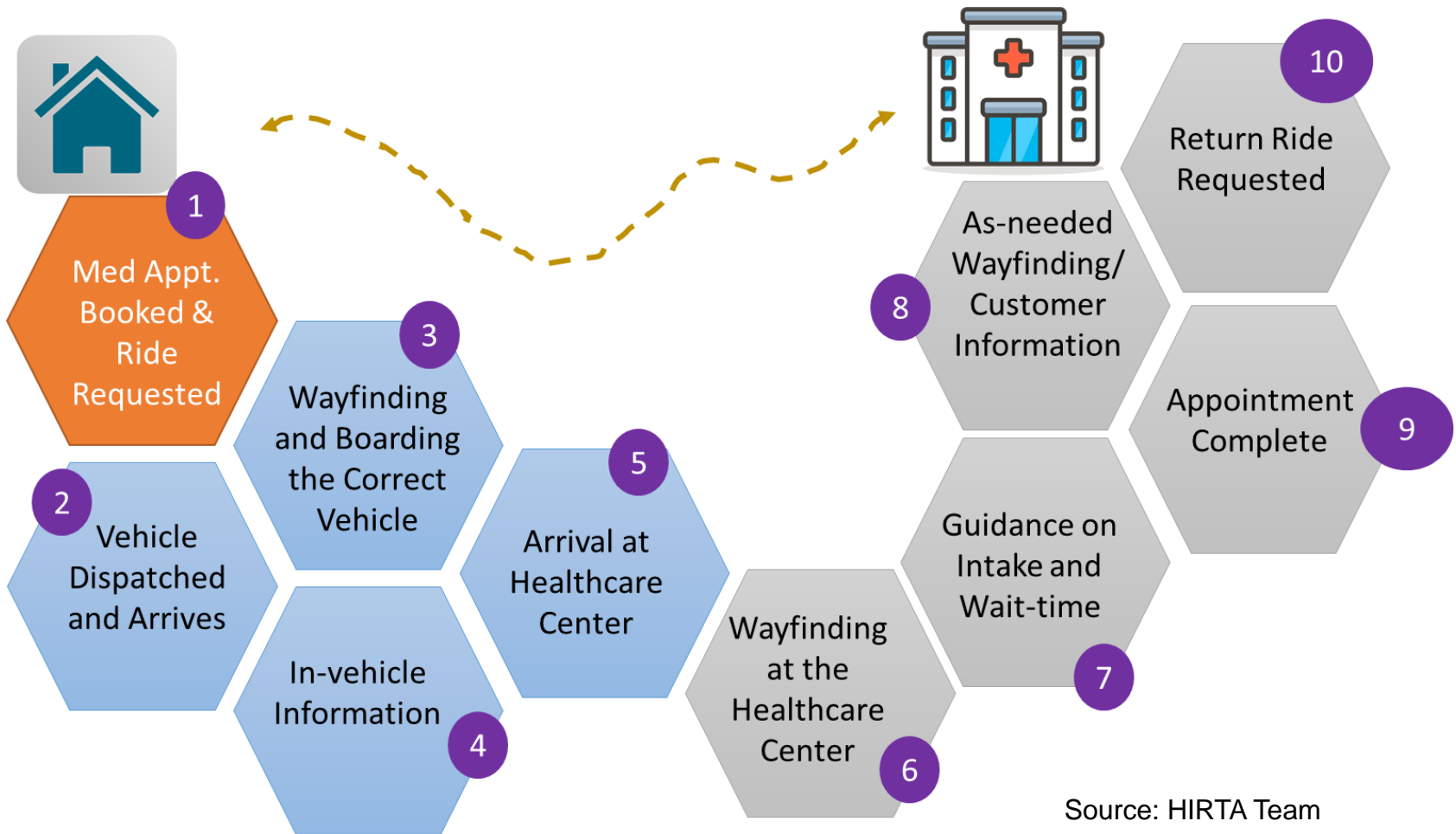


# High-Level Findings from Stakeholders

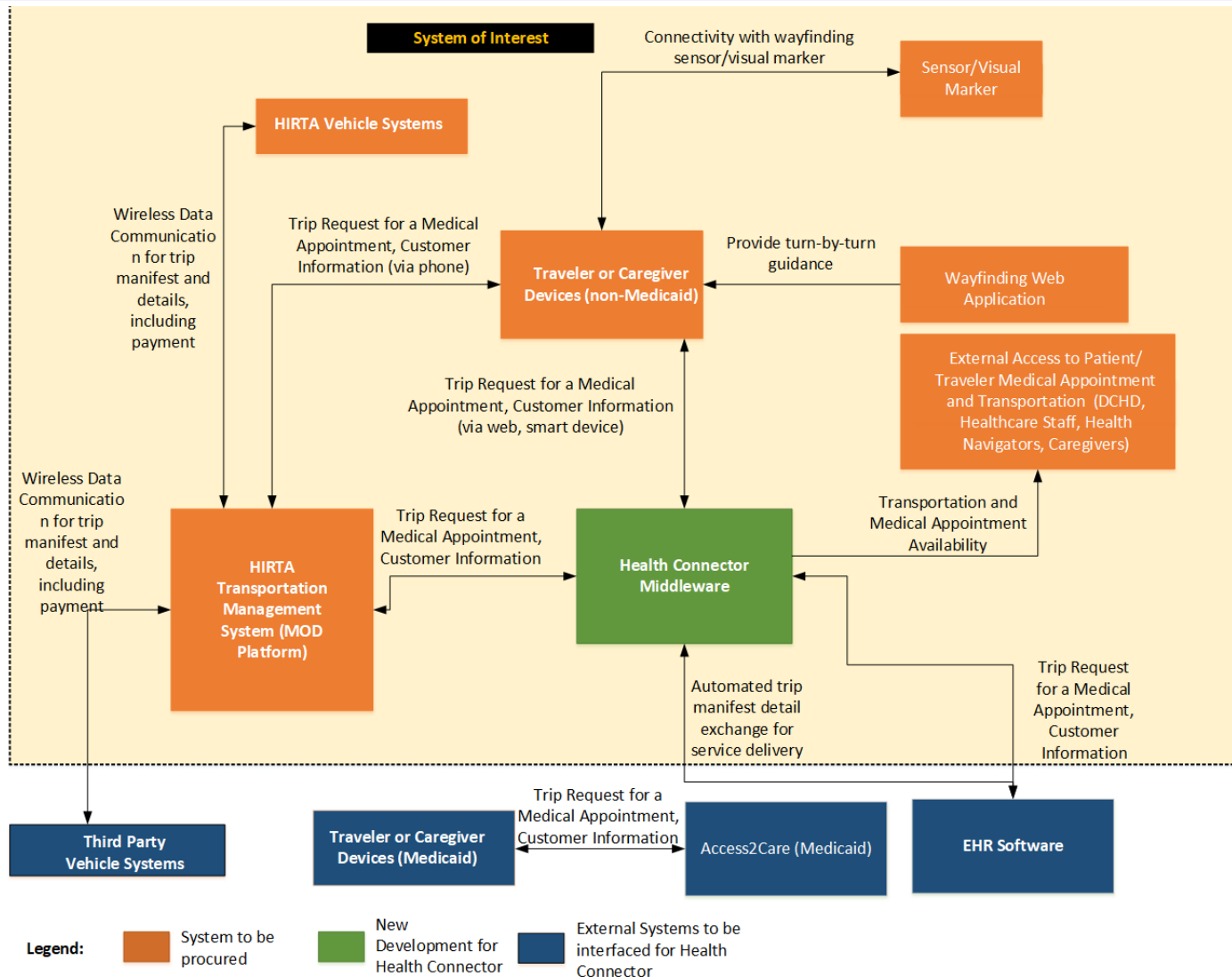
---

- Lack of awareness on transportation options
- Lack of integrated booking and trip management experience
- Limited capabilities in current modes to meet the needs of underserved
- Limited wayfinding capabilities
- Service management challenges with return trips
- Same day and after hour service issues
- Limited data sharing and reporting to measure the performance of healthcare transportation

# Concept Overview



# HIRTA System Overview

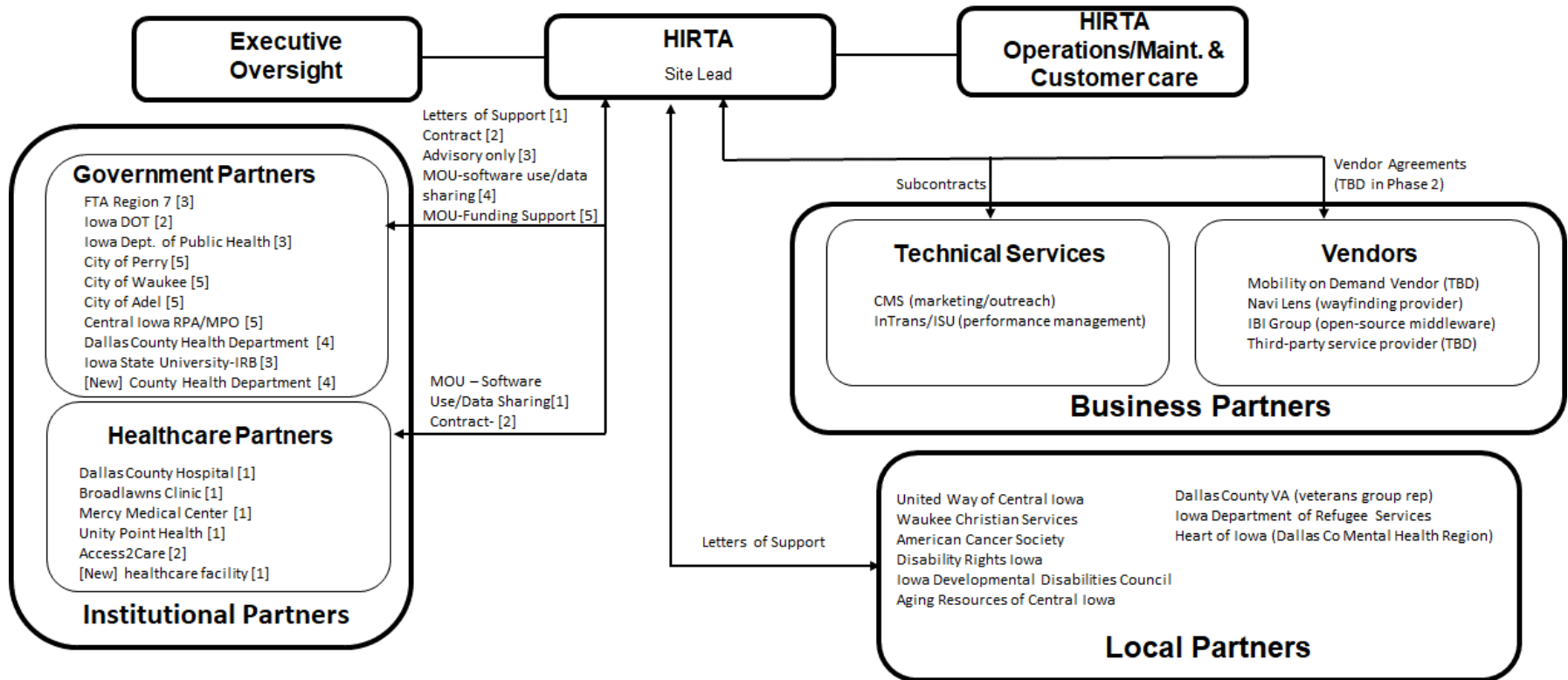




# At-Scale Deployment

Line Item	20% At-Scale Deployment	50% At-Scale Deployment	100% At-Scale Deployment
Service Area	Within 5 miles of City of Perry, Dallas County	Cities of Waukee, Adel and Perry, Dallas County	Entire Dallas County
Number of healthcare facilities	1	2	4
Max number of HIRTA vehicles	2	5	10
Number of contractor vehicles	1	2	5
Max number of trips (HIRTA vehicles)	20	50	100
Max number of trips (contractor vehicles)	5	10	20
Vehicle devices	2	5	10
Number of kiosks	2	2	2
Visual markers for wayfinding			
Vehicles (inside and outside)	4	10	20
Healthcare facility (indoor and outdoor)	20	50	150
Fixed pickup spots	5	15	30

# Phase 3 and Post-Deployment Governance





U.S. Department of Transportation

# ITS4US

---

**IT'S TRANSPORTATION FOR ALL OF US**

**Niagara Frontier Transportation Authority (NFTA)**  
**Complete Trip Deployment in Buffalo, NY**

**Kelly Dixon, Greater Buffalo Niagara Regional  
Transportation Council (GBNRTC)**



# Kelly Dixon, AICP

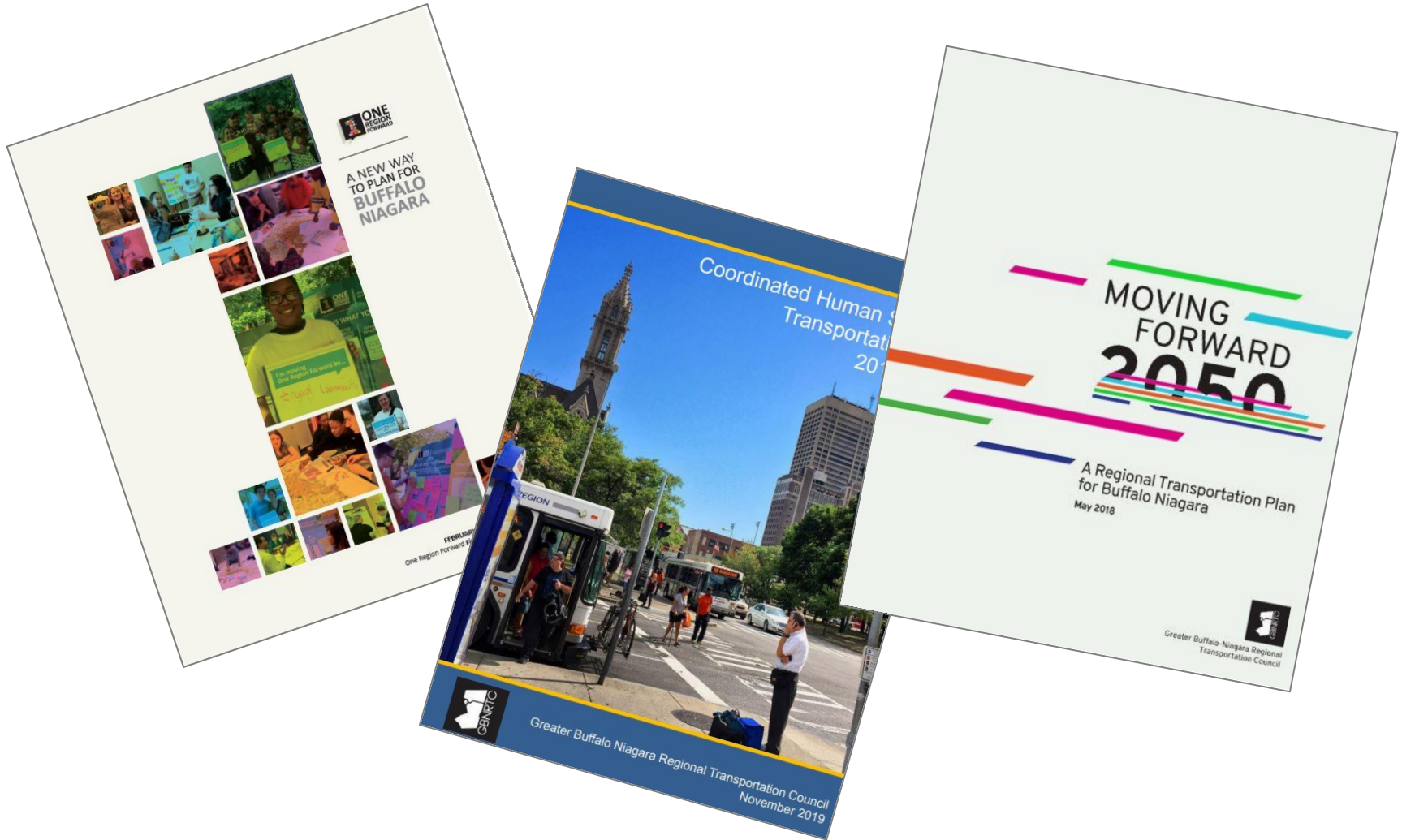
Project Management Lead  
Principal Planner, GBNRTC

# Complete Trip Deployment in Buffalo, NY

---

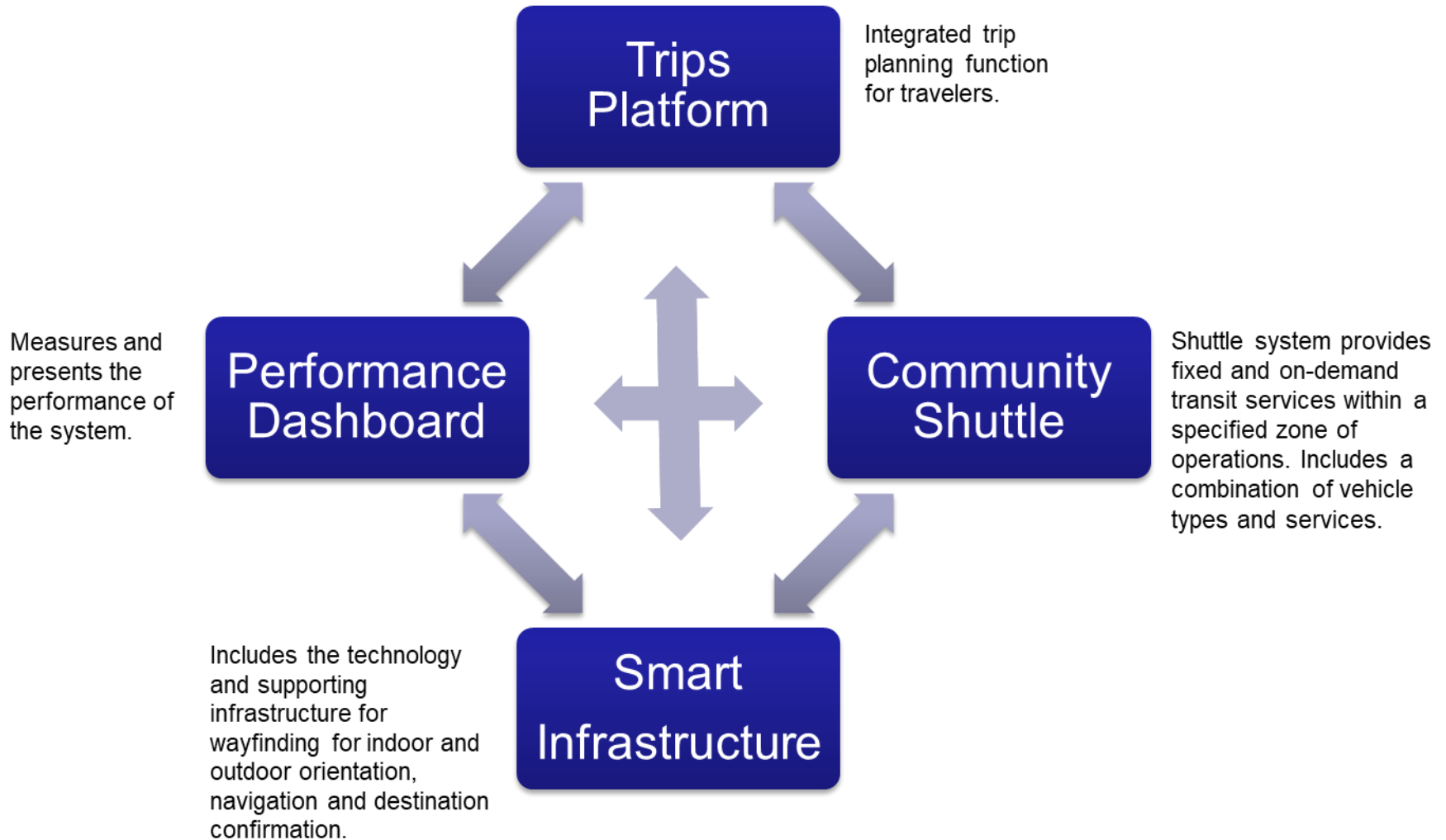
- Deployment area: Buffalo Niagara Medical Campus
- Deploys new and advanced technologies to address existing mobility and accessibility challenges
- Integrates accessible trip planning too with
  - Current transit services
  - Indoor/outdoor wayfinding
  - On-demand shuttle service
  - Intersection pedestrian safety technologies
- Factors in travelers' preferences and accessibility-related needs for comprehensive trip planning

# ITS4US Buffalo & Key GBNRTC Plans

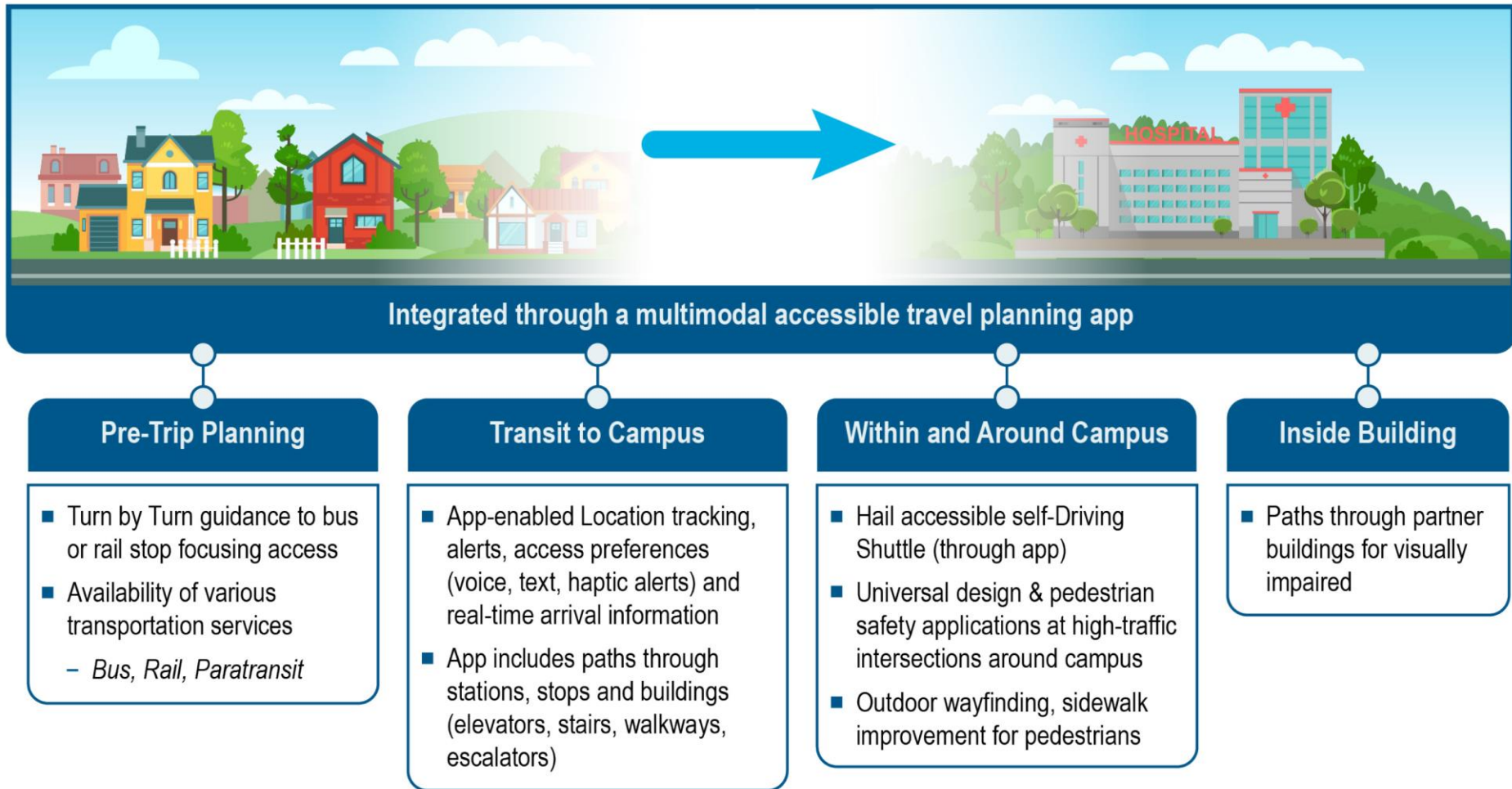


# NFTA System Overview

---



# Summary of Deployment Concept





# Deployment Objectives

---

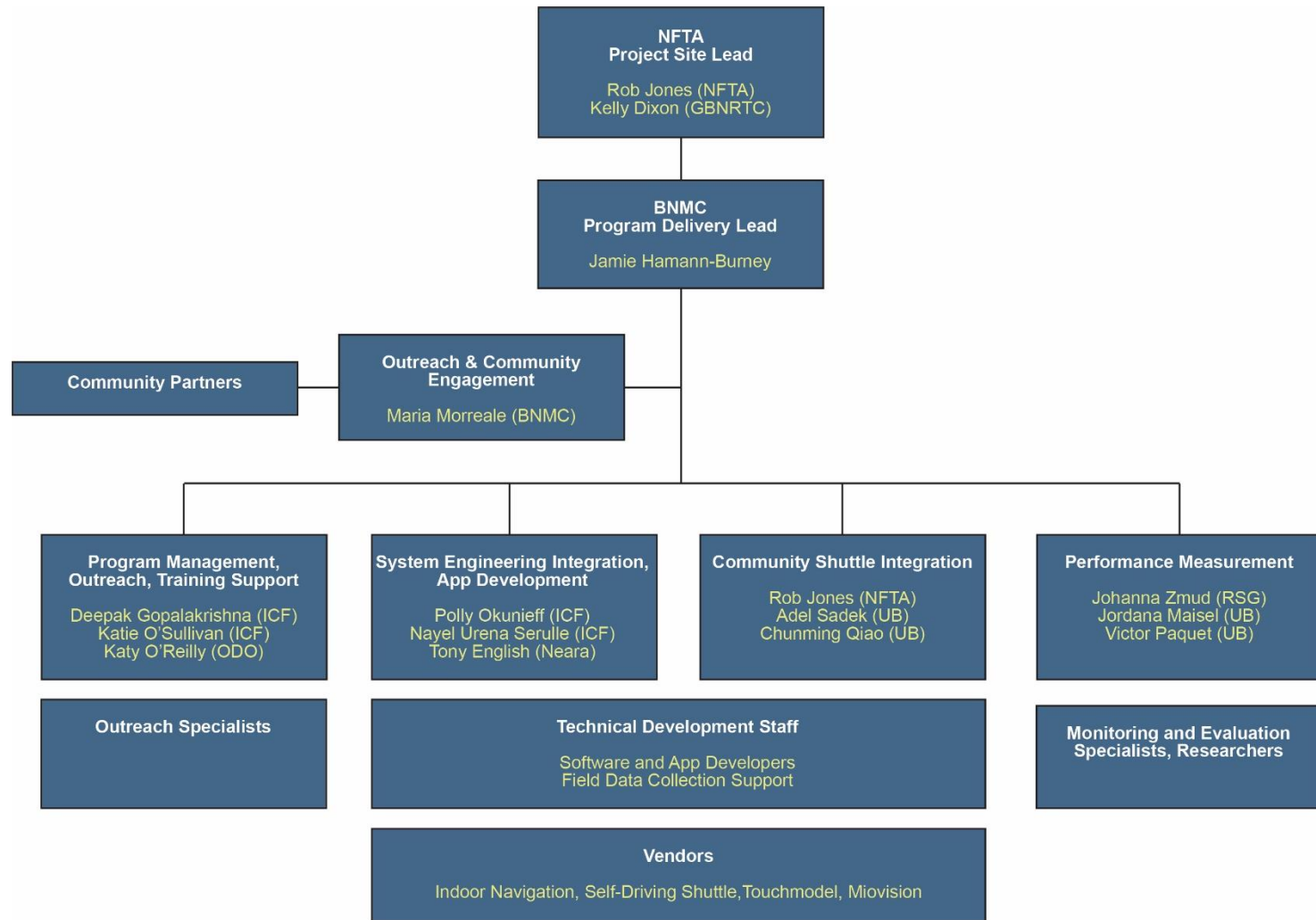
**Consistent, continuous trips** to, from, and within the BNMC area.

**Online and offline** ways to receive real time information on services, and infrastructure usability and accessibility.

Trip paths that are **safe, accessible, and compatible** with user-defined preferences and capabilities.

**Integrated, flexible, demand-responsive, end-to-end** transit options for the community.

# Team Organization



# At-Scale Deployment Summary

Deployment Element	Estimated Number
<b>Participants</b>	<p>100 participants during Phase 2 to support development and testing of the system and its components.</p> <p>300-500 participants total in Phase 3 (including Phase 2 participants). Final number will be dependent on the number of people interested in participating. Outreach and recruitment efforts will focus on obtaining the highest and most diverse number of participants possible.</p>
<b>Beacons/Smart Signs</b>	<p>Under 100 devices. The final number is unknown at the time and will be determined once the facilities are measured.</p>
<b>Touch Models</b>	<p>1 model as part of this pilot (location to be determined in Phase 2). Note that pilot will leverage the efforts of an external study that is placing another model at the Innovation Center on the BNMC.</p>
<b>TIH</b>	<p>2 hubs, with location to be determined in Phase 2.</p>
<b>PED-X Intersections</b>	<p>2 intersections, Main St. &amp; Best St. and Ellicott St. &amp; High St.</p> <p>2 National Transportation Communications for Intelligent Transportation System Protocol (NTCIP) Supported MioVision platform to serve as a communications broker / gateway (one per intersection, total number: 2).</p>
<b>Vehicles</b>	<p>A maximum of 4 shuttles , a combination of SDS and HDS. Phase 2 will start with 2 shuttles for testing and integration efforts, and 2 additional shuttles will be added in Phase 3.</p> <p>SDS Vehicles: 1-2 (note: the number will depend on the procurement)</p> <p>HDS Vehicles: 2-3 depending on the service plan and demand.</p>
<b>Online/Offline Platforms</b>	<p>1 CTP website and mobile application.</p> <p>1 Performance Dashboard.</p>

# Performance Measures and Outcomes

---

The performance measures listed below were developed based on 10 use cases and the data that will be available. Note that **each measure has a set of metrics and targets** that allows the research team to assess each measure.

- Improved ability of the CTP users to make satisfactory trips in the study area or help others to do so in the case of caregivers.
- Usefulness of the CTP Registration and Trip Preferences Processes.
- Usefulness of the CTP Trip Planning and Booking Processes.
- Improved ability to find destinations efficiently using the CTP wayfinding functionality.
- Improved ability to cross specific intersections safely using CTP smart signal functionality.
- Provision of an efficient, reliable, and safe new on-demand transit shuttle system.



U.S. Department of Transportation

# ITS4US

---

**IT'S TRANSPORTATION FOR ALL OF US**

**University of Washington**

**ITS4US Deployment Project: Transportation Data Equity Initiative**

**Kristin Tufte, UW**



# Kristin Tufte

Data Management Architect and Lead  
University of Washington

# University of Washington (UW) ITS4US Team



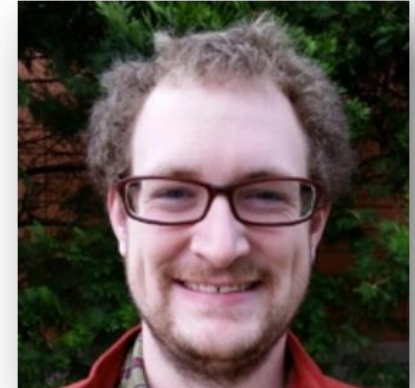
Anat Caspi, PhD  
UW, PI, DDL



Mark Hallenbeck  
UW, PBL



Kristin Tufte  
UW, DMAL



Nick Bolten  
UW, TAL



Adam Danczyk  
Cambridge  
Systematics



Alice Marecek  
Cambridge  
Systematics

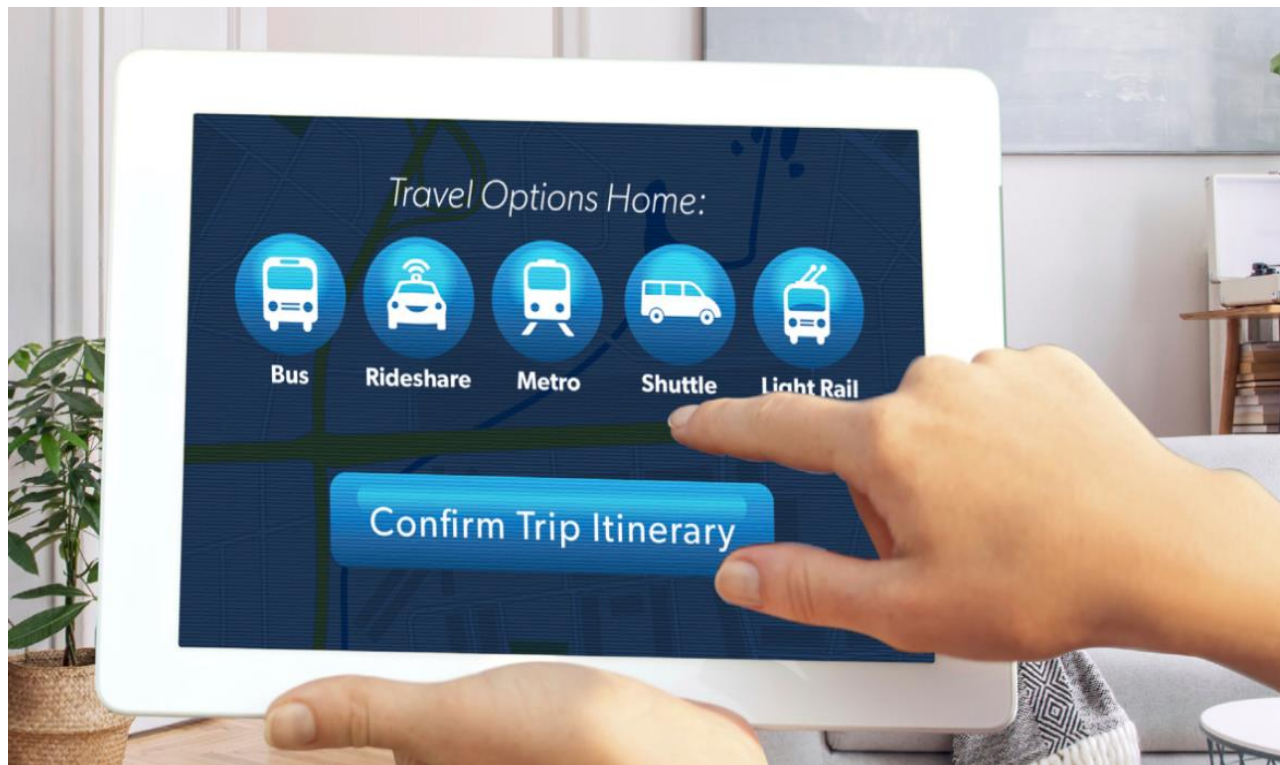


Suresh  
Devalapalli,  
GS



# Transportation Data Equity Initiative (TDEI)

Tools for data sharing and interoperability to provide equitable navigation options for all travelers irrespective of location, income, or disability





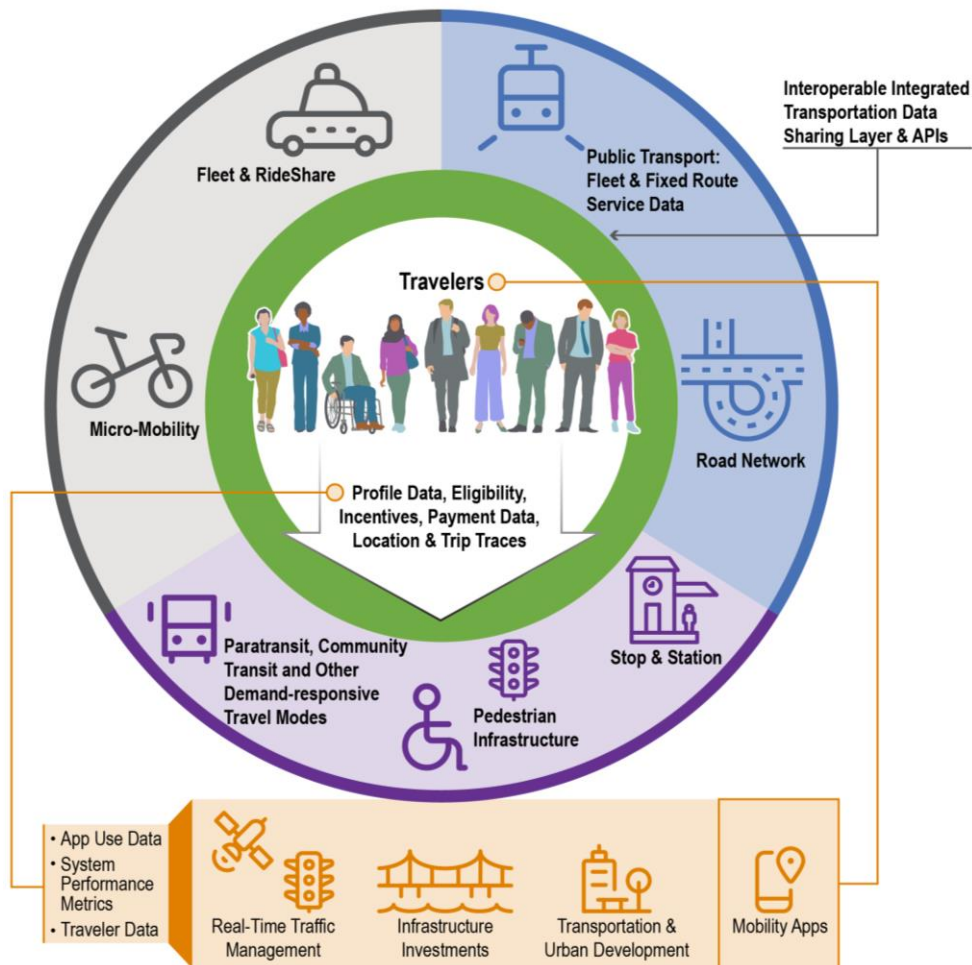
# Traveler Quote

---

*Using a tool like directions on Google Maps doesn't really help me get around. **Actually sometimes this does more harm than good.** I'm sent down streets I can't cross, or up inclines that are impossible to climb. It can be deeply frustrating.*

“

# All travelers need useful travel data they can trust



# Provide More Equitable Mobility Benefits

Create, modify and improve data standards

OpenSidewalks

GTFS-Pathways  
(transit stations)

GTFS-Flex  
(on-demand transit)

Tools to collect, store and share the data

Data Collection

Data Vetting

Data Provisioning Services

Demonstrate the value of the data

Multimodal AccessMap

Soundscape

Audium



# Deployment Sites

---



# ITS4US Site Contact Information

---

## **GDOT**

Alan Davis  
Co-Project Management Lead  
[aladavis@dot.ga.gov](mailto:aladavis@dot.ga.gov)

Maria Roell  
Co-Deployment Lead  
[MRoell@atlantaregional.org](mailto:MRoell@atlantaregional.org)

## **HIRTA**

Brooke Ramsey  
Project Management Lead  
[BRamsey@ridehirta.com](mailto:BRamsey@ridehirta.com)

## **NFTA**

Robert Jones  
Concept Deployment Lead  
[robert.jones@nfta.com](mailto:robert.jones@nfta.com)

Kelly Dixon  
Project Management Lead  
[kdixon@gbnrtc.org](mailto:kdixon@gbnrtc.org)

## **University of Washington**

Anat Caspi  
Deployment Development Lead  
[caspi@cs.washington.edu](mailto:caspi@cs.washington.edu)  
<https://transitequity.cs.washington.edu/>

# ITS4US Contact Information

---

Elina Zlotchenko  
Program Manager, ITS JPO  
[Elina.Zlotchenko@dot.gov](mailto:Elina.Zlotchenko@dot.gov)

Visit the ITS4US Deployment Program Website:

<https://its.dot.gov/its4us/>

ITS4US Deployment Program Video

<https://youtu.be/cLJx0MOjY2o>

# Questions & Answers