



UNITED STATES
DEPARTMENT OF TRANSPORTATION

9th ITS European Congress Dublin, Ireland

Strategic Views on ITS Innovation

June 7, 2013

Ken Leonard

Director, ITS Joint Program Office

Innovation Framework

- Incubate
 - Connected Vehicle Safety Pilot
- Mature
 - Integrated Corridor Management
- Exploit
 - ITS Asset Viewer



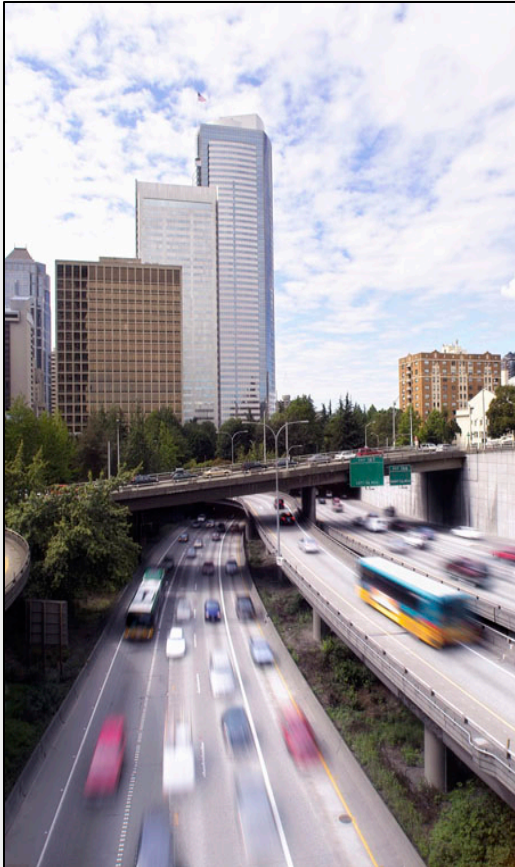
Safety Pilot Model Deployment

- Major road test and real world implementation
- Approximately 3000 vehicles
- Multiple vehicle & device types
- Roadside infrastructure



http://www.its.dot.gov/safety_pilot/

What is ICM?



- The integrated management of freeway, arterial, transit, and parking systems within a corridor
- Management of the corridor as a system, rather than the more traditional approach of managing individual assets



ICM Demonstration Sites

San Diego, CA



Characteristics:

- Popular freight, tourist and commuter corridor
- Lengthening peak travel periods

Corridor Infrastructure

- Decision-Support System
- Actionable traveler information
 - 511 (phone and website)
 - Comparable travel times
- Managed lanes
- Rerouting of traffic
 - Responsive signal operations
 - Coordinated ramp metering and traffic signals
- Mode shift
 - Bus rapid transit
 - Transit signal priority

Dallas, TX



Characteristics:

- Major employers
- No ability to expand
- Surrounding construction planned

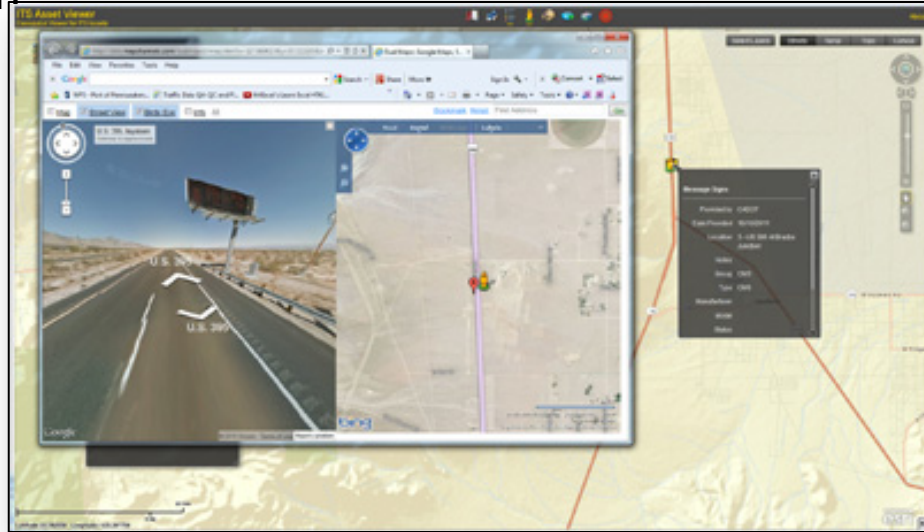
Corridor Infrastructure

- Decision-Support System
- Actionable traveler information
 - 511 (phone and website)
 - Comparable travel times
- Rerouting of traffic
 - Responsive signal operations
- Mode Shift
 - Light rail
 - Parking management
 - Real-time service adjustments



ITS Asset Viewer

- New Geographical View of National ITS Deployment and technology exploitation
- The ITS Asset Viewer is based on the USDOT's ITS Deployment Tracking Survey,
- The survey measures the extent of ITS deployment within 108 metropolitan areas across the United States.
- With the Asset Viewer you can locate
 - Traffic Controllers
 - Traffic Detection Sensors
 - Dynamic Message Signs
 - Traffic Cameras
 - Highway Advisory Radio



<http://itsdeployment.ornl.gov/itsassets>

